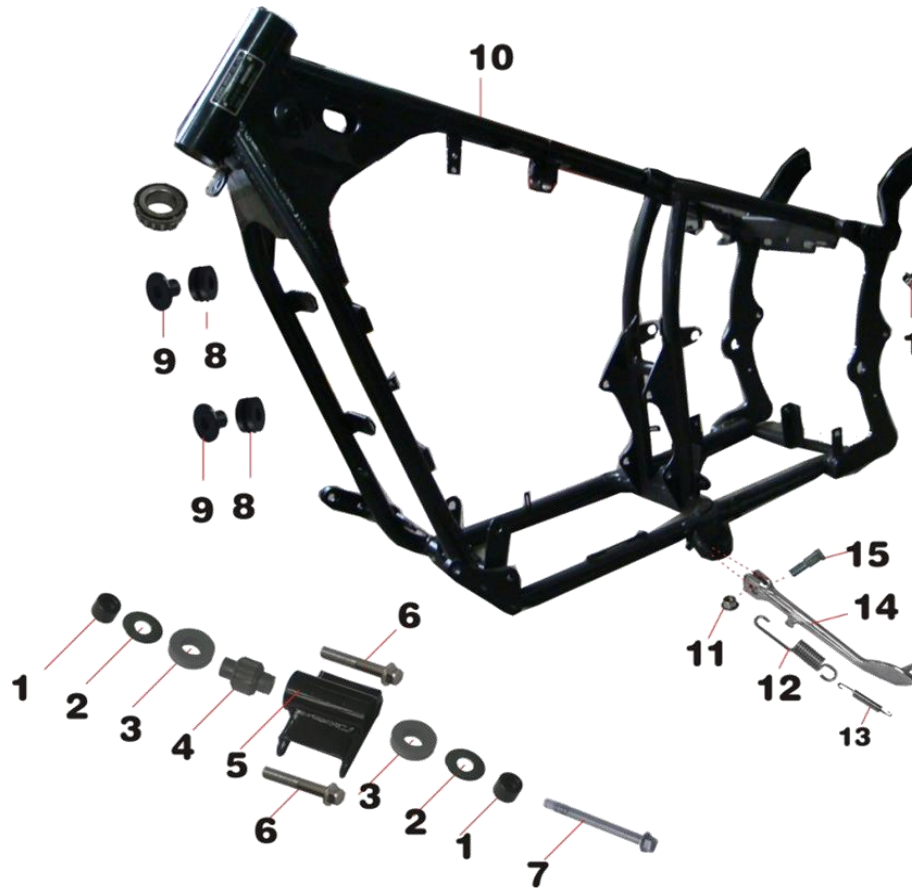


**DAYTONA EURO5 PARTS BOOK**

**DD125E-5C EURO5**

## F-2 D02 CHASIS



NO.	PART CODE	description	Quantity
1	1.01.02.0500100	Sleeve(Short)	2
2	1.01.02.0500500	washer	2
3	1.01.02.0500200	oil seal	2
4	1.01.02.0500300	rubber mount	2
5	1.57.02.0500000	the fixed frame	1
6	1.99.26.1011200	bolt M10x1.5x112	2
7	1.99.26.1013200	bolt M10x1.5x112	1
8	2.24.0117.00700	Water tank cushion	4
9	2.24.0117.00600	Water tank cushion steel sleeve	4
10	1.53.02.0110000	chassis	1
11	1.99.44.100001R	nutM10x1.5	5
12	1.01.14.0000300	Side stand spring	1
13	1.45.14.0000400	engine bottom fixture	1
14	1.33.14.010000S	Side stand NEW same as M15 Pilder	1
15	1.51.14.0000200	screw	1
16	1.57.02.0400000	electrical installation board	1
17	1.99.27.080160N	bolt M8X16	2

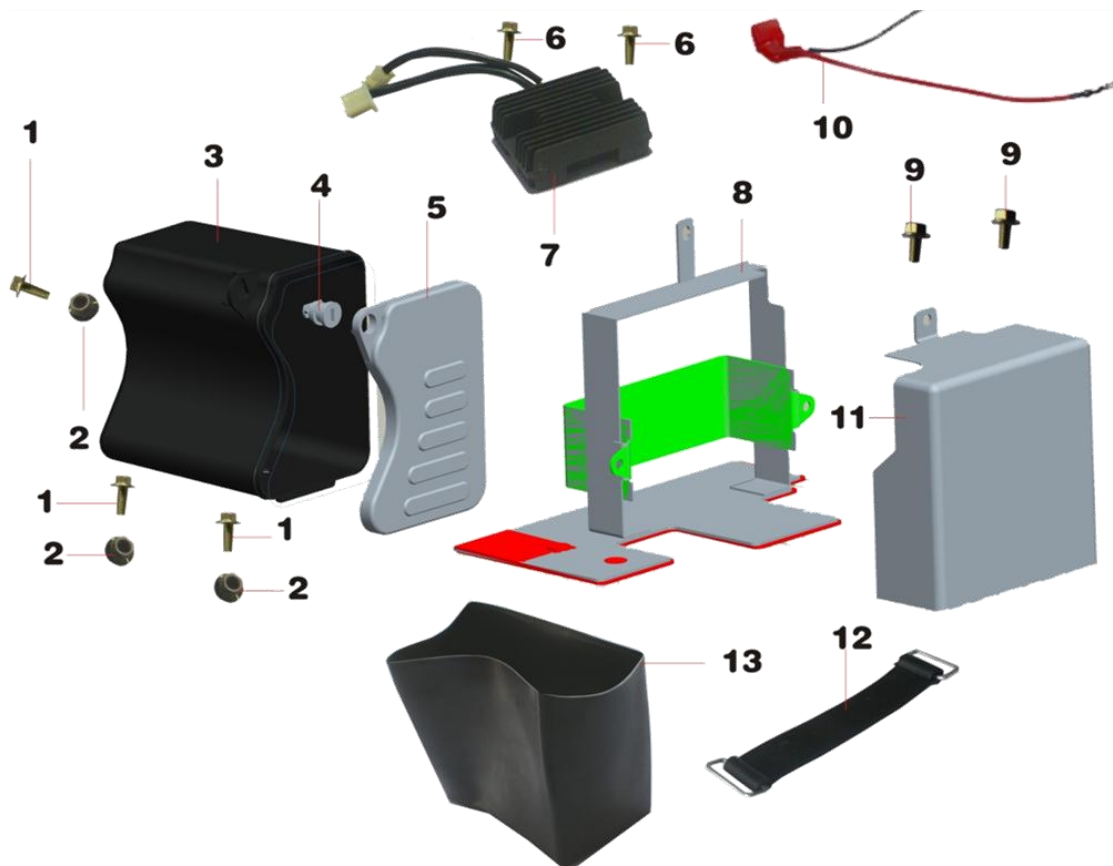
## F-3 D03 LIGHTS AND MAIN CABLE



NO.	PART CODE	description	Quantity
1	1.99.03.100300R	Bolts M10 x 30	1
2	1.99.56.100000R	spring washer	1
3	1.53.03.0100600	Headlight holder	1
4	1.99.24.1004500	bolts M10 x 1.5 x 45 (stainless steel)	1
5	1.99.42.100000N	Nut M10 x 1.5 (Stainless Steel)	1
6	1.99.56.100000S	Washer	1
7	1.C6.03.0100010	Front light assembly LED	1
8	1.57.03.0100300	Headlight bulb 12V35W	1
9	1.11.19.0000200	Nut M6	2
10	1.99.43.060000N	Nut M6	2
11	1.53.03.0400100	front turn light mount	1
12	1.53.03.0300010	right front turn light	1
13	1.53.03.0200010	left front turn light	1
14	1.C6.32.0200000	main cable assy	1
15	1.23.04.0700300	Single break switch	1
16	1.57.15.0100000	Ignition switch assembly	1
17	1.56.32.0901100	Relay	1
18	1.57.03.0500000	right rear turn light	1
19	1.99.27.080160N	bolt M8X16	1
20	1.57.03.0410000	rear L turn light bracket	1

21	1.57.03.0400000	left rear turn light	1
22	1.99.42.1000010	Nut M10X1.25	2
23	1.57.03.0410000	rear L turn light bracket	1
24	1.57.03.0500000	right rear turn light	1
25	1.57.03.0510000	rear R turn light bracket	1
26	1.01.03.0900300	tail light bulb	1
27	1.45.03.0600020	tail light	1
28	1.45.13.500020N	Sleeve	3
29	1.99.43.060000H	Nut M6	3
30	1.45.03.0400100	Turnsignal bulb	4
31	2.51.0111.70030	doide	2

## F-4 D04 BATTERY HOLDER



NO.	PART CODE	description	Quantity
1	1.99.27.060120N	bolt M6x12	3
2	1.99.43.060000H	Nut M6	3
3	1.57.15.0000100	Tool box body	1
4	1.57.15.000030S	tool box lock	1
5	1.57.15.000020S	tool box cover(chrome)	1
6	1.99.26.0603000	bolt M6X30	2
7	2.23.0111.40000	rectifier	1
8	1.57.02.0300000	battery holder	1
9	1.99.27.080160N	bolt M8x16	4
10	1.57.04.0010000	battery cover	1
11	1.23.04.0200000	battery positive wire	1
12	1.11.04.0000200	band,battery	1
13	1.66.04.0400100	cushion	2

## F-5 D05 HANDLEBAR



NO.	PART CODE	description	Quantity
1	1.C6.06.0830000	throttle cable pull	1
2	1.C6.06.0700200	Clutch cable kit	1
3	1.99.08.0603000	screw M6x30	2
4	1.23.06.0000200	bar balance	2
5	1.01.06.0400000	Grip.L.Hand	1
6	1.30.06.0250000	Left switch assy	1
7	1.01.06.0500900	Grip.R.Hand	1
8	1.A3.06.0300000	Right switch assy	1
9	1.53.06.0110010	handle bar	1
10	1.25.06.0500000	Clutch control assy	1
12	1.01.06.0300100	Switch limit block	1
13	1.99.15.480160N	Self tapping screw4.8x16	1
14	1.45.06.1700000	Mirror R.RR	1
15	1.45.06.1600000	Mirror L.RR	1

## F-6 D06 Front shaker frame and speedometer

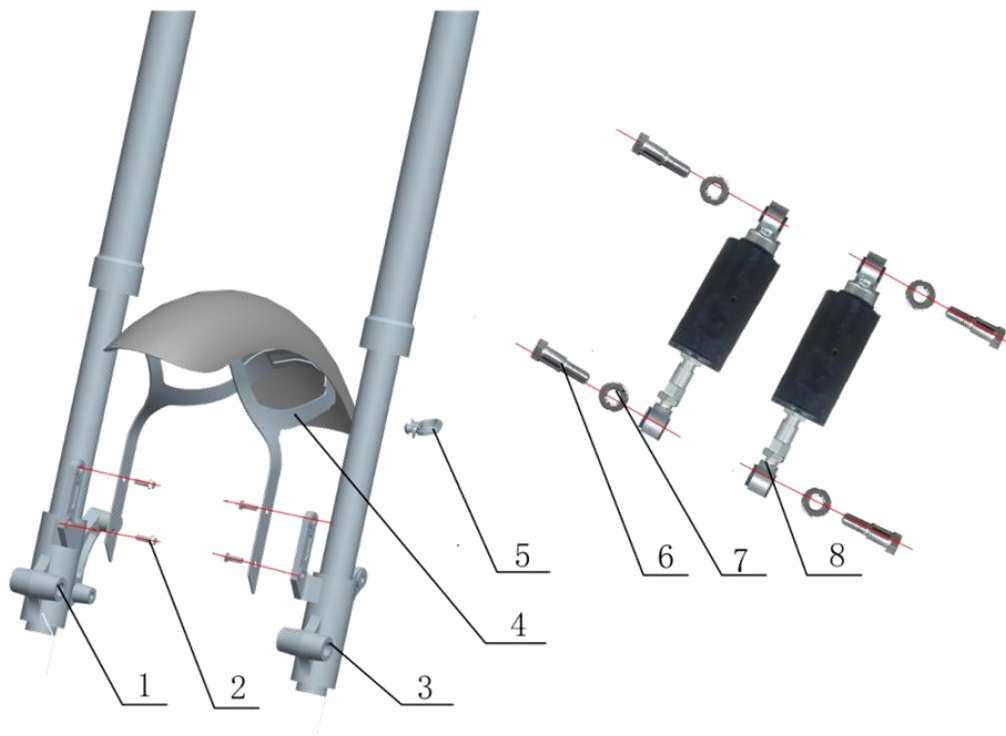


NO.	PART CODE	description	Quantity
1	1.A3.07.0500000	Side reflector assembly (E)	2
2	1.53.07.010010C	bottom tree(matt black)	1
3	1.99.27.080140N	screw M8X14	1
4	1.53.27.0120100	hook	1
5	1.53.15.0200100	Head lock mount	1
6	1.99.24.060160S	bolts M6 × 16 (chrome)	2
7	1.53.15.0000000	Head lock	1
8	1.99.05.050120N	screw M5 × 12	2
9	1.99.03.080100S	Screw M8 × 10 (Chrome)	2
10	1.57.07.0000400	lower cover	1
11	1.99.72.3020500	bearing30205	2
12	1.57.07.0100200	steering axle	1
13	1.57.07.0000200	top cover	1
14	1.57.07.0000100	Bearing nut M25 × 1 × 9.5	1
15	1.99.26.1005010	bolts M10 × 1.5 × 50	4
16	1.53.06.010010C	Up plate(matt black)	1

17	1.53.06.000070C	fixed seat (matt black)	2
18	1.57.06.0000500	washer	1
19	1.57.06.0000400	nut M25 x 1 x 17	1
20	1.99.24.060160S	bolts M6 x 16 (chrome)	2
21	1.03.05.0100000	Odometer components (LCD)	1

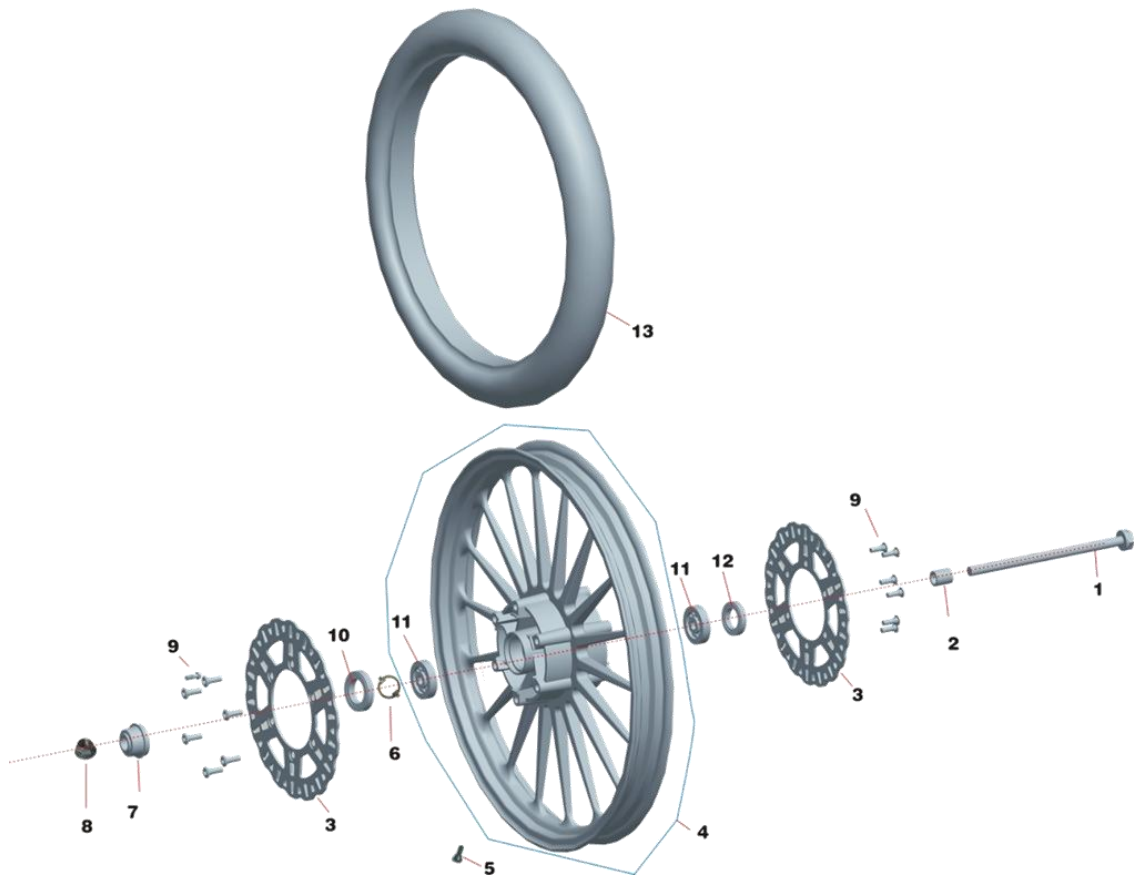


## F-7 D07 FRONT AND REAR SUSPENSION



NO.	PART CODE	description	Quantity
1	1.C6.07.040000A	Butter dashpot R.FR	1
2	1.99.27.060160H	Bolt M6x15	4
3	1.C6.07.030000A	Butter dashpot L.FR	1
4	1.53.27.000000E	Front fender	1
5	1.11.27.0000300	Guide,cable	1
6	1.57.20.0000200	Back buffer dashpot bolt	4
7	1.11.11.0000200	Back buffer dashpot washer	4
8	1.29.20.0000000	Back buffer dashpot	2

## F-8 D08 FRONT WHEEL



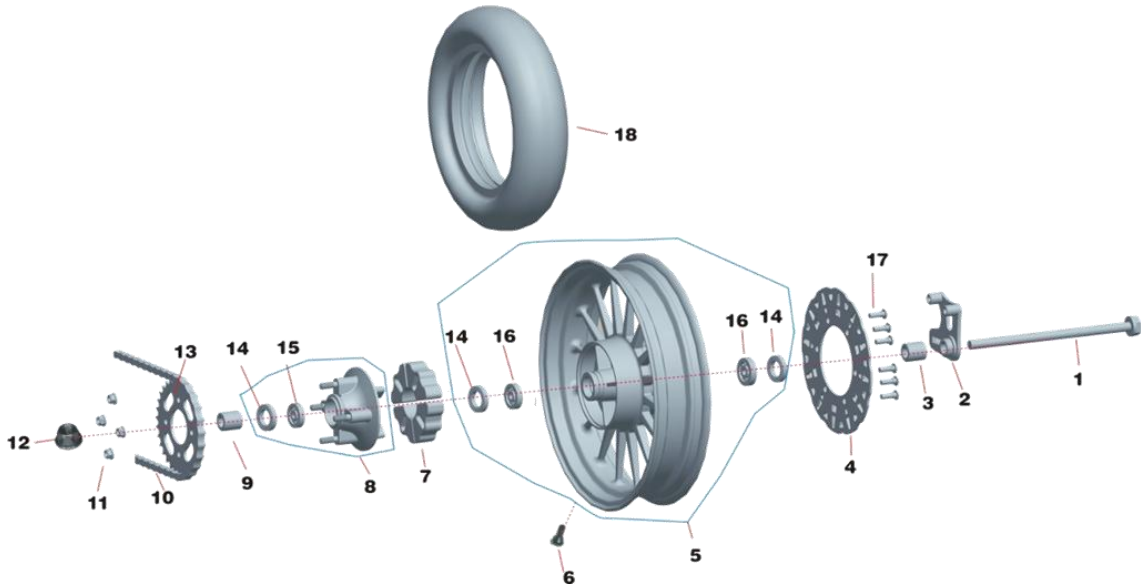
NO.	PART CODE	description	Quantity
1	1.53.10.040000N	complete rear brake assembly	1
2	1.C6.08.0000400	complete front brake assembly	1
3	1.29.08.0000200	front disc brakeΦ300(new same as M15 Pilder)	2
4	1.53.08.0100100	front rim set(21x2.15 black/CP)	1
5	1.01.10.0000500	Valve nut	1
7	1.C6.05.0000100	LCD odometer speed sensor	1
8	1.99.44.140000N	nut M14 x 1.5	1
9	1.01.08.000030R	screws M8 x 24	12
10	1.53.08.0000500	oil seal40x55x5	1
11	1.99.72.6303100	Bearing 6303RS	2
12	1.53.10.0000400	oil seal30x47x5	1
13	1.53.08.0001210	front tire (90/90-21)E-Mark	1

## F-9 D09 BRAKES



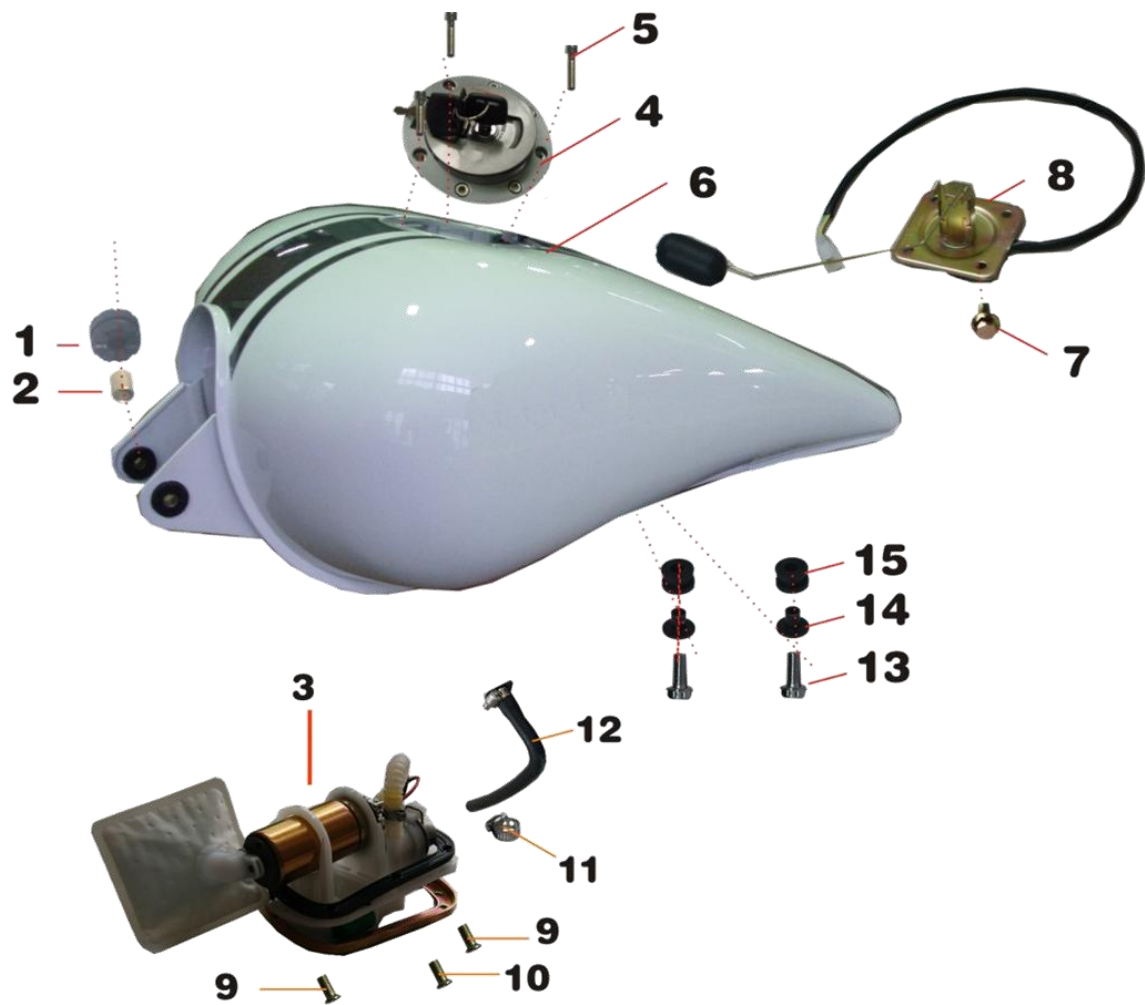
NO.	PART CODE	description	Quantity
1	1.C5.10.0200000	brake pump assy(CBS)	1

## F-10 D10 REAR WHEEL



NO.	PART CODE	description	Quantity
1	1.53.10.040000N	Rear wheel axle(14×330mm)	1
2	1.53.10.0300100	Mount plate.Rear brake pump	1
3	1.53.10.0001100	Rear axle sleeve (Φ17 × Φ30 × 32)	1
4	1.68.10.0001710	Disk RR.brake240	1
5		rear rim (MT2.15X21,Black)	1
6	1.01.10.0000500	Valve nut	1
7	1.53.10.0000300	Buffer	4
8	1.53.10.0000610	Buffer (530)	1
9	1.53.10.0001100	Rear axle sleeve (Φ17 × Φ30 × 32)	1
10	1.99.79.3001300	Chain 530H-1 x 126L	1
11	1.99.44.100001R	Self-locking nut M10×1.25	4
12	1.99.44.140000N	Self locking nut M14*1.5	1
13	1.65.10.0600100	rear sprocket41T(530H ,big hole)	1
14	1.53.10.0000400	Oil seal 30 × 47 × 5	3
15	1.99.72.600500	Bearing 6005RZ	1
16	1.99.72.6303100	Bearing 6303RS	2
17	1.01.08.000030R	Hex bolt interM8×24	6
18	1.53.08.0001210	front tire (90/90-21)E-Mark	1

## F-11 D11 FUEL TANK



NO.	PART CODE	description	Quantity
1	1.11.11.0000300	space	2
2	1.11.11.0000100	rubber washer	2
3	1.28.32.0900000	fuel pump (4holes)	1
4	1.53.15.0000000	Fuel tank lock set	1
5	1.99.03.0502200	bolt M5x22	3
6	1.53.11.010000B	fuel tank	1
7	1.99.43.060000H	Nut M6	4
8	1.63.05.0400000	Oil sensor	1
11	1.56.32.0900800	Clamp $\Phi$ 13	2

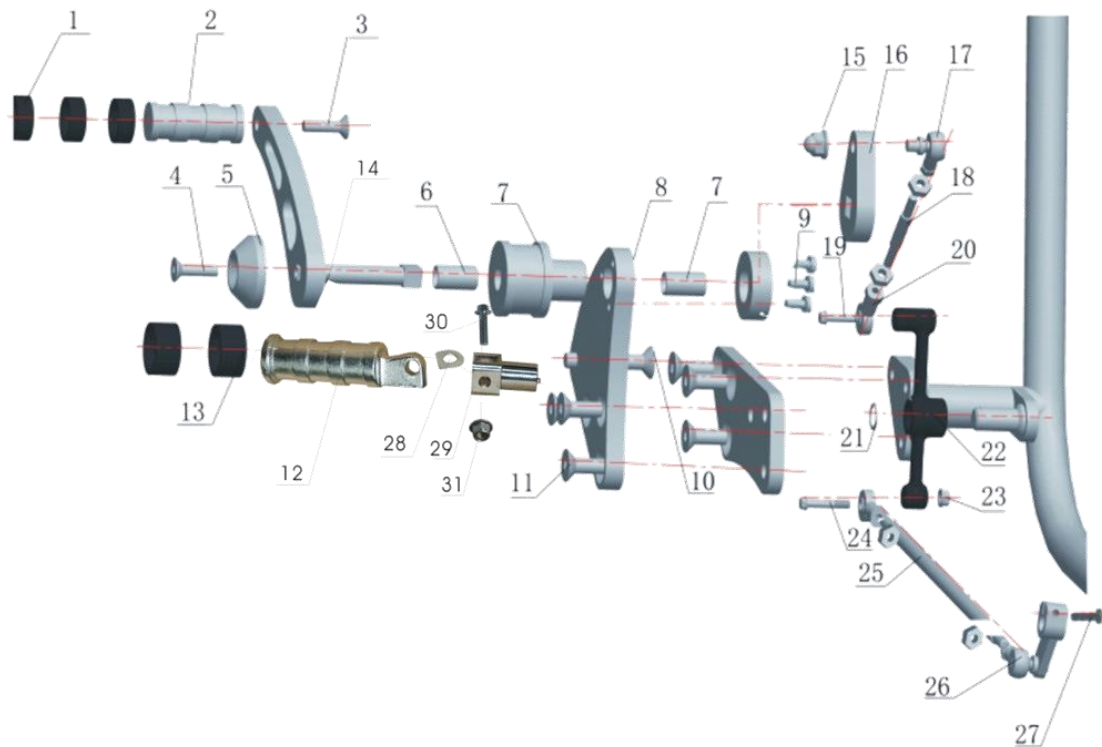
12	1.03.32.0900300	High pressure tubing $\Phi 8 \times \Phi 15$	0.69
13	1.99.27.080250N	bolts M8 $\times$ 25	4
14	1.01.18.0000600	Mat block	4
15	1.01.18.0000700	Cushion (black)	4

## F-12 D12 SEAT



NO.	PART CODE	description	Quantity
1	1.63.13.0100010	dual seat	1
2	1.57.13.0000800	Dual seat rear mounting bracket	1
3	1.57.13.0100100	Hinge, L.seat	1
4	1.57.13.0100200	Hinge, R.seat	1
5	1.99.43.060000H	Nut M6	6
6	1.99.27.100150S	Bolt M10×1.5×15	2
7	1.99.27.0601200	Bolt M6*12	1
8	1.99.44.060000S	Self-locking nut M6	1

## F-14 D14 GEAR SHIFT POLE ASSY

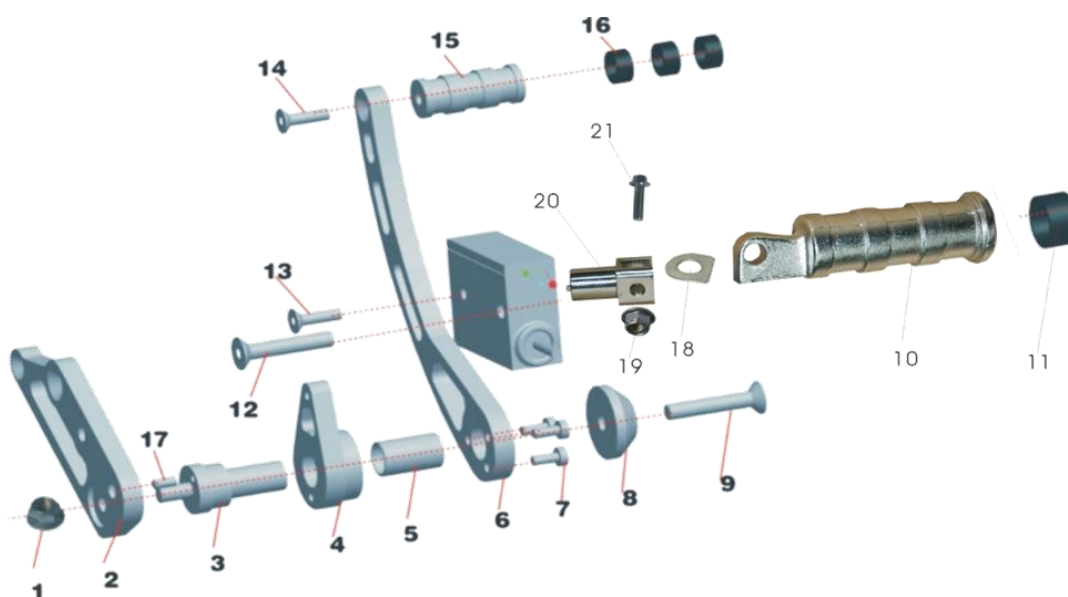


NO.	PART CODE	description	Quantity
1	1.57.14.0240400	Rubber sleeve	3
2	1.63.14.0240100	Peg pole (CP)	1
3	1.99.02.0802500	Hex inner bolt M8*25	1
4	1.99.02.0601600	Hex bolt M6*16	1
5	1.57.14.0600100	Connector L	1
6	1.57.14.0610200	Alex sleeve (small)	1
7	1.57.14.0610100	Mounting bracket. L (CP)	1
8	1.57.14.060040S	Mounting plate. L(chrome)	1
9	1.99.03.0601600	bolt M6*16	3
10	1.99.02.1004500	screw M10X1.5	1
11	1.99.02.1002500	Bolt M10 × 1.5 × 25	6
12	1.57.14.0250200	left peg (folded)	1
13	1.57.14.0230300	Rubber sleeve( II)	3
14	1.57.14.0600200	Shift pole (I)	1
15	1.01.03.0101300	cap Nut M8	1
16	1.53.14.0600600	Variable pull pole( II )	1
17	1.63.14.0600800	Front joint	1
18	1.53.14.0600200	Two end screw	1



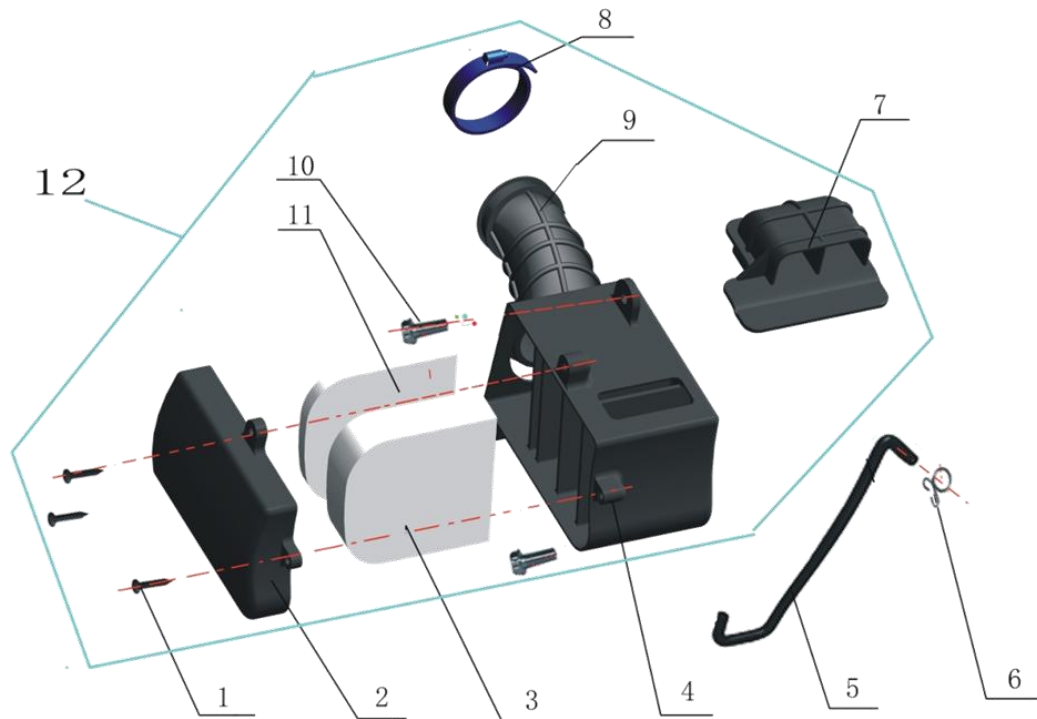
19	1.01.060500500	Screw M6*25	1
20	1.57.10.0102000	Chain	2
21	1.99.63.1500000	ring φ15	1
22	1.53.14.0600110	Shift pole NEW	1
23	1.99.44.060000S	Self - locking nut M6	1
24	1.99.26.0603500	Bolt M6x35 (Chrome)	1
25	1.53.14.0600700	Two end screw	1
26	1.17.14.0800000	Shake lever assy	1
27	1.99.24.0602000	bolt M6x20	1
28	1.99.57.1000000	washer10	1
29	1.57.14.0250110	peg mount	1
30	1.99.27.1004000	bolt M10x40	1

## F15 D15 REAR BRAKE POLE ASSY



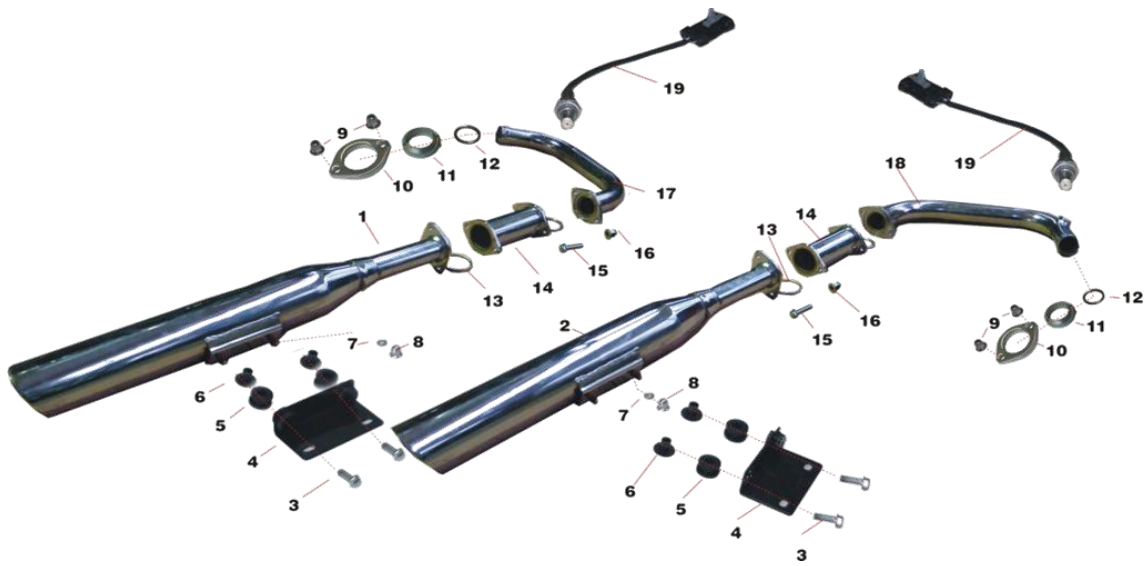
NO.	PART CODE	description
1	1.99.44.100000R	Self-locking nut M10 × 1.25
2	1.57.14.020010S	Mounting bracket. R (CP)
3	1.57.14.0200000	Control spacer
4	1.57.14.0220000	Pole bracket. Rear brake
5	1.57.14.0220200	Spacer (big)
6	1.57.14.0200200	Rear brake pole
7	1.99.03.0601600	Hex bolt interM6*16
8	1.57.14.0200300	right connect CP
9	1.99.02.1003500	Hex inner bolt M10*1.5*35
10	1.57.14.0240400	Rubber sleeve
11	1.57.14.0250300	right peg (folded)
12	1.99.02.1008000	Bolt M10*1.5*65
13	1.99.02.0803500	bolt M8*35
14	1.99.02.0802500	bolt M8*25
15	1.63.14.0240100	Peg pole (CP)
16	1.57.14.0240300	Rubber sleeve(IV)
17	1.57.14.0220300	Pin
18	1.57.14.0250400	flexible washer
19	1.99.44.100000R	Self lock nut M10*1.25
20	1.57.14.0250100	peg mount
21	1.99.27.1004000	Bolt M10*40

## F-16 D16 AIR FILER



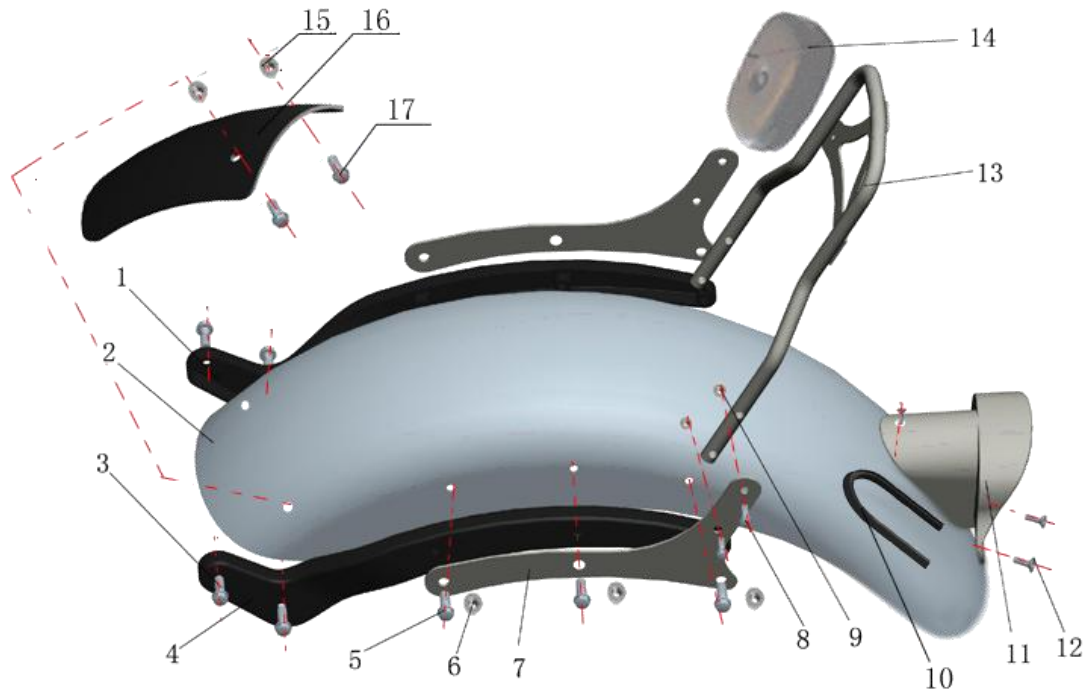
NO.	PART CODE	description	Quantity
1	1.99.15.4202400	Self-tapping screwST4.2*24	3
5	1.63.17.0000500	circuit pipe	1
6	1.01.11.0000200	Locking ring 8	1
7	DD125E-5C1700-002	air filter outlet pipe	1
8	1.01.17.0000100	Hoop	1
9	1.01.17.0000200	Air filter inlet	1
10	1.01.02.000030H	Boltm6X12	2
11	DD300E-6-1701-000	Screen,filter	1
12	1.C5.17.0000000	air filter	1

## F-17 D17 EXHAUST



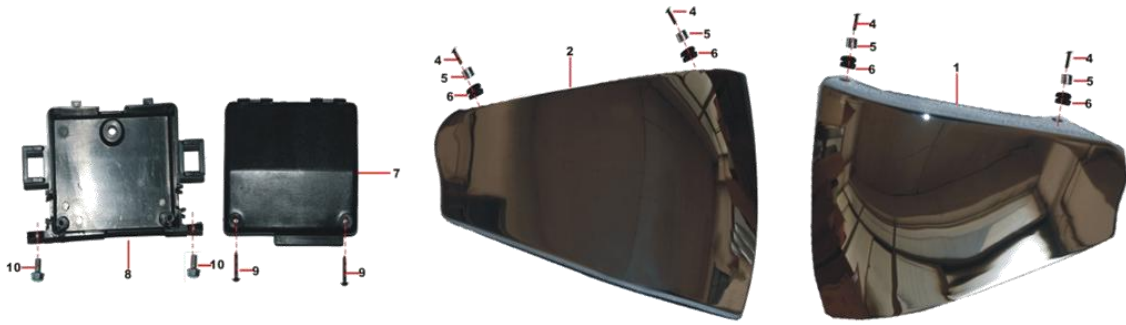
NO.	PART CODE	description	Quantity
1	1.C6.18.0800100	left rear exhaust	1
2	1.C6.18.0800200	right rear exhaust pipe	1
3	1.C6.18.0700100	exhaust pipe	1
4	1.C6.18.0700200	exhaust pipe	1
5	1.A3.32.0600000	Oxygen sensor (M12 × 1.25)	2

## F-18 D18 REAR FENDER



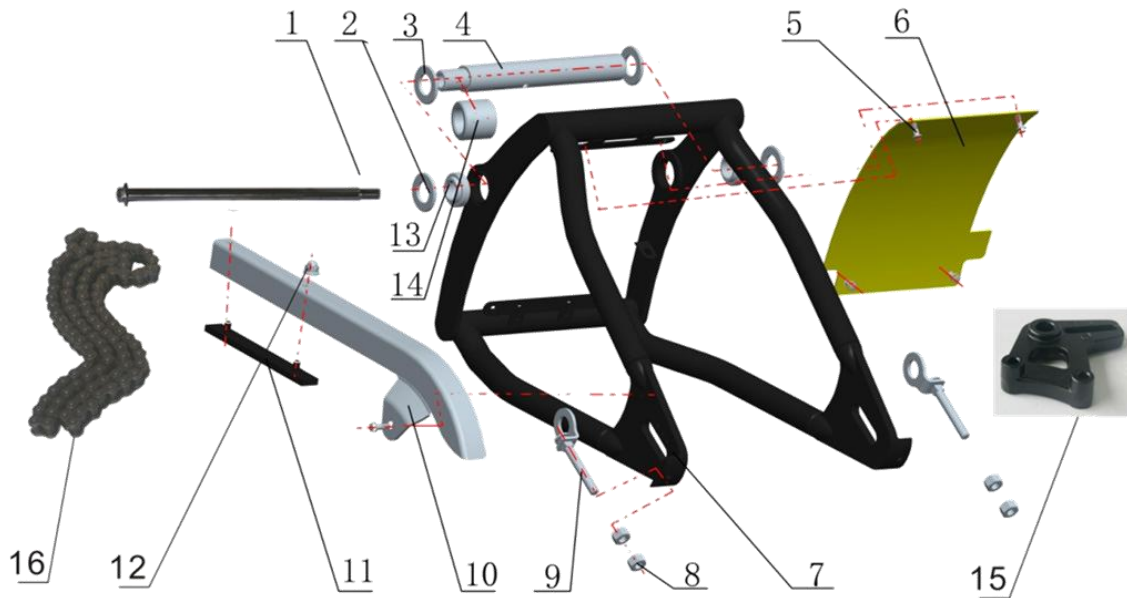
NO.	PART CODE	description	Quantity
1	1.53.21.0080000	Empress splash guard (Left)	1
2	1.53.21.0000000	Rear fender	1
3	1.99.11.0600000	BoltM10×1.5×25	4
4	1.53.21.0070000	Empress splash guard (light)	1
5	1.99.27.0801600	BoltM8×16	6
6	1.99.43.0800000	Bolt M8	6
7	1.53.13.0000300	sissy side bracket L	2
8	1.01.02.0000700	BoltM8×16	4
9	1.01.03.0101300	Nut M8	4
10	1.56.11.0400200	Rubber strip	1
11	1.53.22.0000000	Tail light bracket	1
12	1.99.03.0502000	boltM5X20	3
13	1.65.13.0510000	back rest side bracket	1
14	1.63.13.0400000	Backrest pad	1
15	1.99.44.060000R	Self-locking nut M6	2
16	1.57.09.0200100	rear anti-water plate	1
17	1.99.27.060120N	bolt M6×12	2

## F-19 D19 SIDE COVERS



NO.	PART CODE	description	Quantity
1	1.57.16.010010S	left side cover (CP)	1
2	1.57.16.020010S	right side cover	1
3	1.C5.24.0000200		2
4	1.99.04.060160R	Bolt m6*16	4
5	1.11.17.0000500	ring	4
6	1.11.17.0000600	inner casing ( $\Phi 7 \times \Phi 9 \times 7$ )	4
7	1.11.06.0000400	wire box cover	1
8	1.11.06.0000500	wire box	1
9	1.99.15.4202400	Self-tapping screwST4.2*24	2
10	1.11.06.0000700	BlotM6*14	2

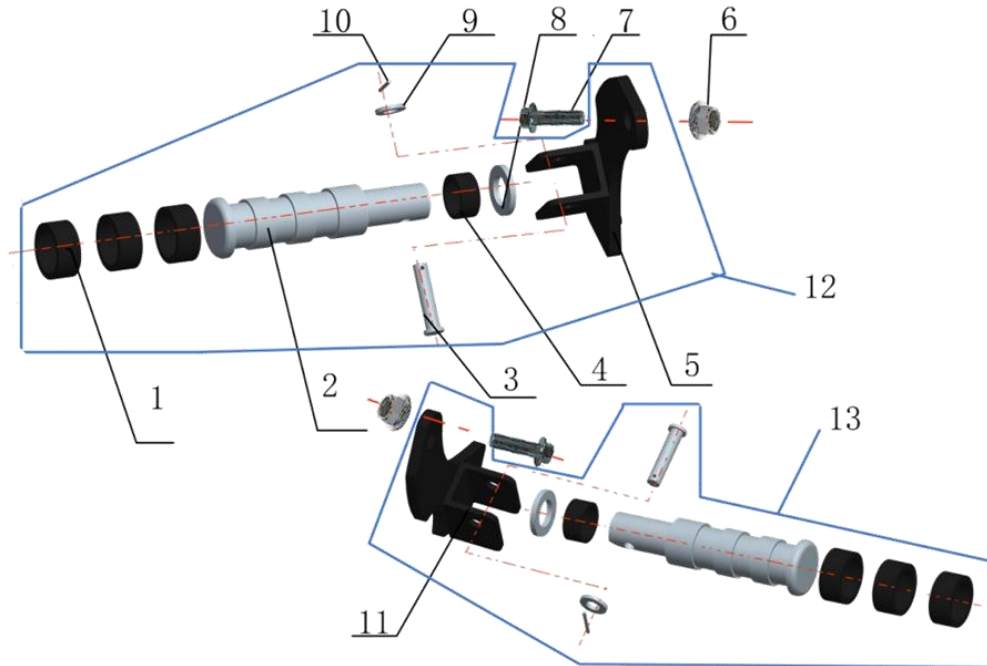
## F-20 D20 REAR ARM



NO. PART CODE description Quantity

NO.	PART CODE	description	Quantity
1	1.C6.09.0000500	Rear fork shaft $\Phi 17 \times 300$	1
2	1.03.10.0000100		2
3	1.57.09.0000900	Rear wheel washer ( $\Phi 15 \times \Phi 30 \times 3$ )	2
4	1.C6.09.0000600	Empres fork stalk	1
5	1.99.26.060120R	Bolt M6x12	4
6	1.57.09.0200100	Fender RR	1
7	1.53.09.0100000	Behind shake	1
8	1.99.42.0800000	Nut M8 (stainless)	4
9	1.63.10.0400100	Adjuster screw	2
10	1.57.09.0300000	Chain shell	1
11	1.57.09.0000300	Chain protect	1
12	1.99.40.0500000	nuts M5 (stainless)	2
13	1.99.73.1700000	Spherical plain bearings GE17ES	2
14	1.57.09.0010100	Chain case	1
15	1.53.10.0300100	Rear brake pump mounting plate	1
16	1.99.79.7112600	Chain 530OU-1x126L	1

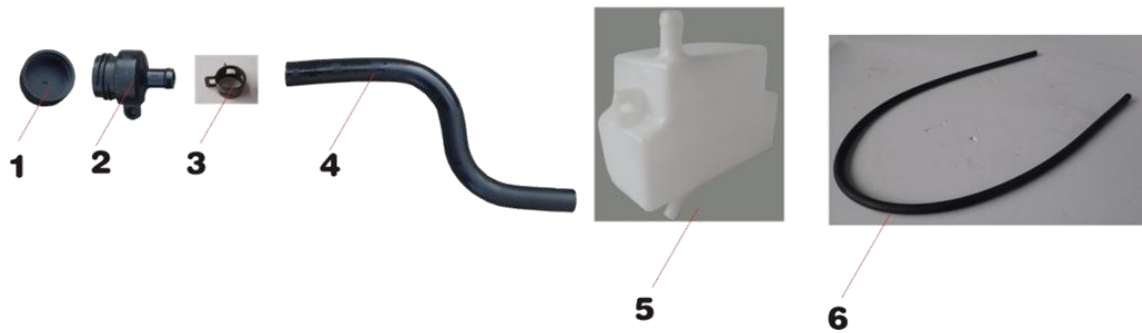
## F-21 D21 PASSANGER FOOTREST



NO.	PART CODE	description	Quantity
1	1.57.14.0230300	rubber (2)	6
2	1.63.19.1100300	passenger's pedal pole	2
3	1.99.61.060350S	pin shaft	2
4	1.57.14.0230300	rubber (2)	6
5	1.63.19.1320000	passenger's pedal pole (L)	1
6	1.99.44.100001R	lock nut M10 x 1.5	2
7	1.99.27.100250S	bolts M10 x 1.5 x 25 (chrome)	2
8	1.63.19.1200200	pedal washer $\Phi 30 \times \Phi 20 \times 2$	2
9	1.99.52.080000R	seal8	2
10	1.99.60.020200R	Open pin	2
11	1.63.19.1330000	right pedal mounting plate	1
12	1.53.BZ.1901000	left passenger's pedal	1
13	1.53.BZ.1902000	right passenger's pedal	1



## F-22 D22 WATER BOTTLE



NO.	PART CODE	description	Quantity
1	1.23.00.0000300	Kettle cover	1
2	1.23.00.0000200	Kettle cock	1
3	1.51.18.0400600	Clip	2
4	1.57.00.0000510	Kettle connect hose	1
5	1.72.00.0000110	Kettle	1
6	2.24.0117.00500	Inlet hose	1

## D-23 DD23 RADIATOR



NO.	PART CODE	description	Quantity
1	1.63.00.0000400	Radiator cover	1
2	1.72.00.0000200	Kettle cover	1
3	1.63.00.0100100	Water tank inlet pipe	1
4	2.23.0117.12010	Fan switch	1
5	2.27.0117.11040	Water tank (lengthened)	1
6	2.23.0117.01000	Clamp	4
7	2.23.0117.00210	Water tank outlet pipe $\phi$ 17.5	1
8	1.56.00.0001100	Radiator mounting	2
9	2.24.0117.20030	Fan	1