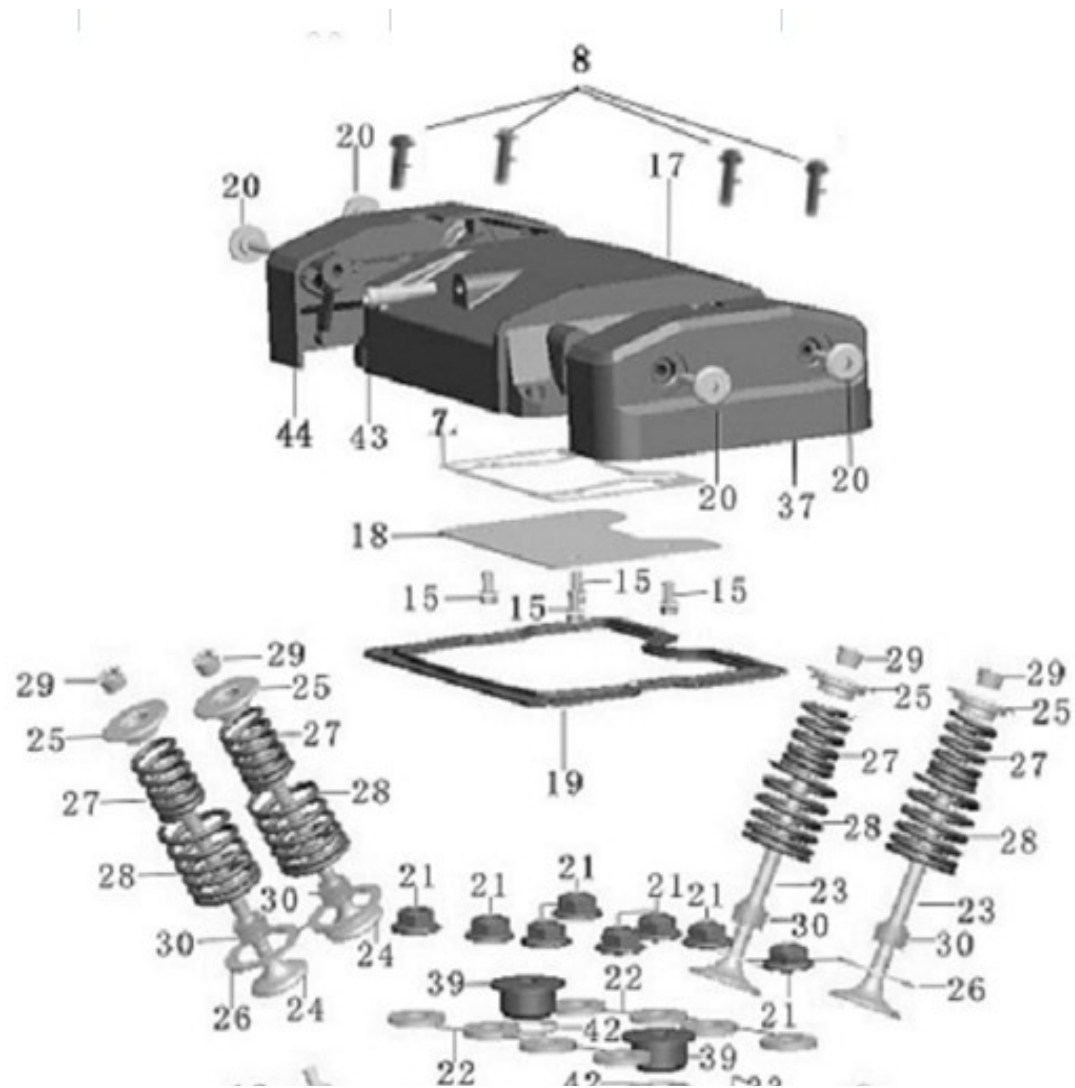
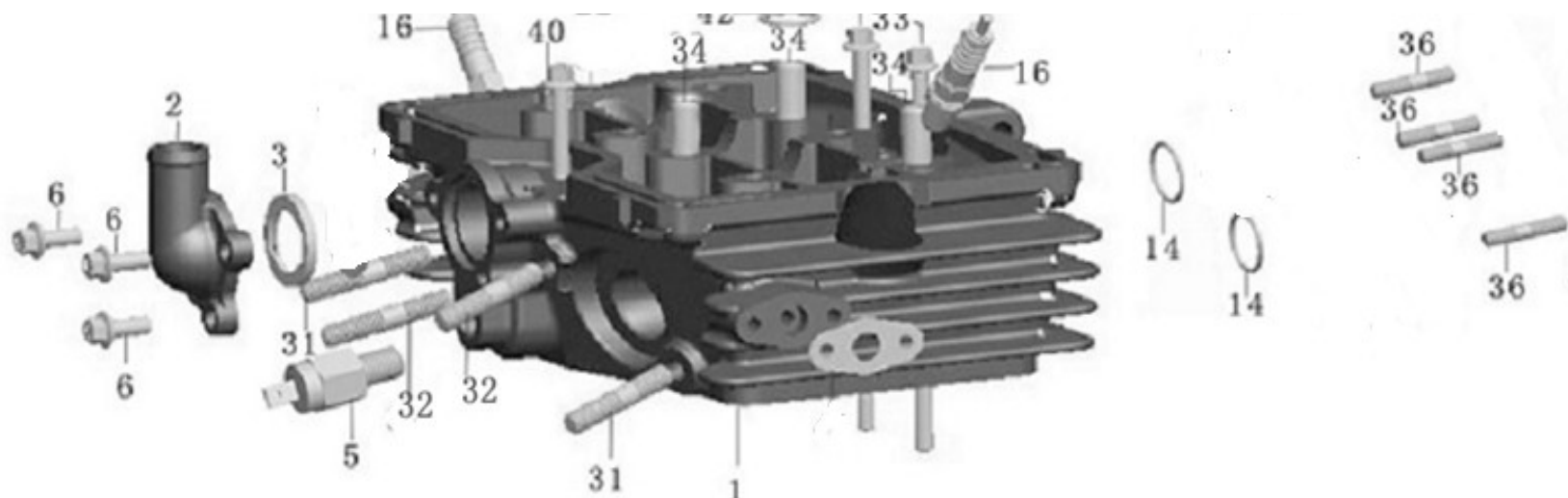


E-1: 气缸盖总成 (Cylinder head assembly)



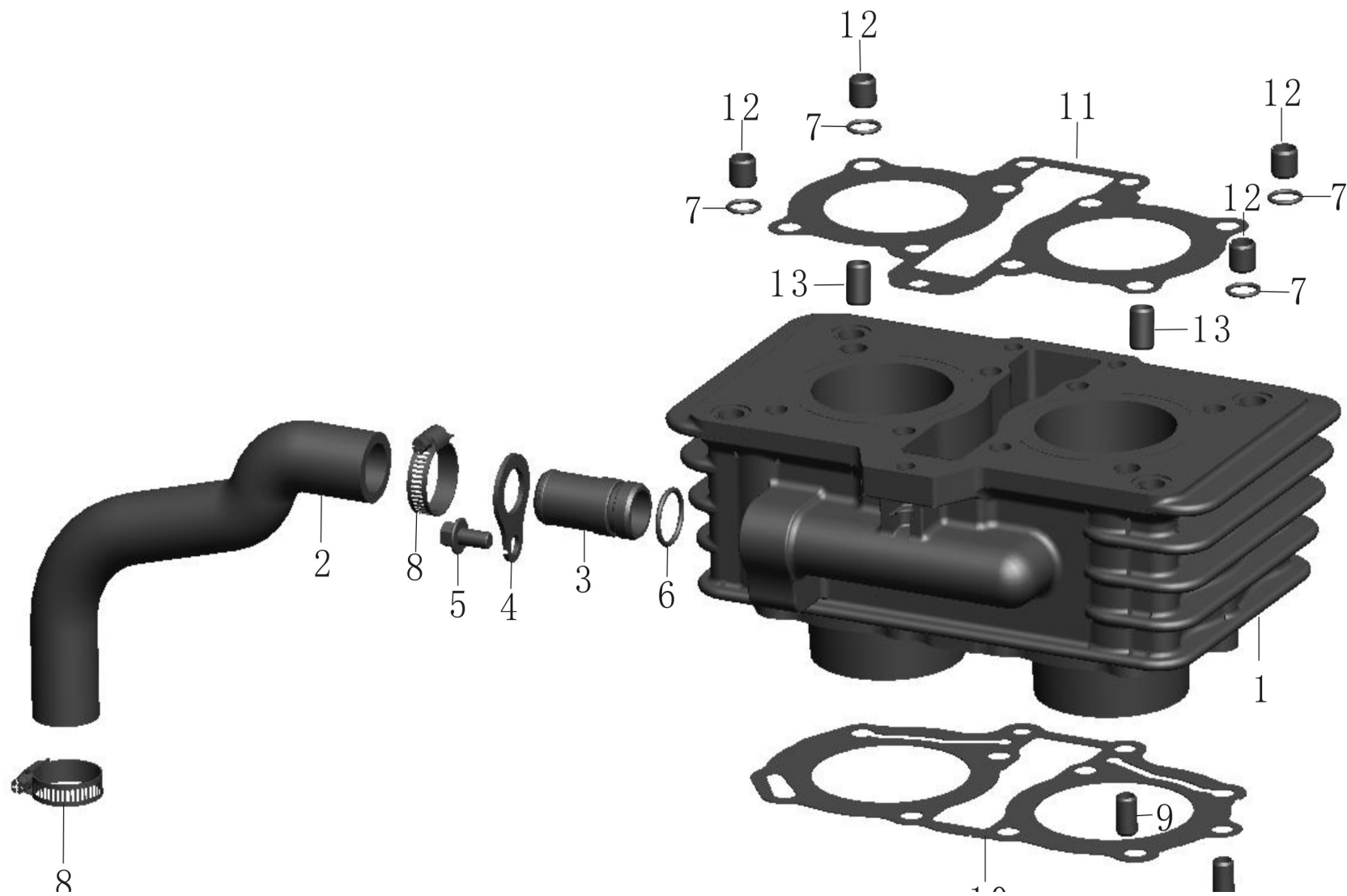


E-1: 气缸盖总成 (Cylinder head assembly)

序号	物料编码	零件图号	物料名称	物料名称	用量	设计变更	设变时间	单价	单价	备注
NO.	PART CODE	drawing ref.code	Description	Description	Quantity	Design chang	Date	RMB	USD	Remark
1	2.33.0101.10028	DD247MJ-0101100A	汽缸盖组件 (滚动轴承、亚光黑)	(Head comp ,cylinder)	1					
2	2.22.0101.0251C	DD262MP-0101025A	缸盖出水管接头 (无螺纹孔) 黑色	cylinder head connector	1					
3	2.20.0112.14300	DD250E-0112142	o型密封圈 30×2.65	O ring	1					
5	2.24.0118.00200	DD250E-9B-0118002	水温感应器 (电喷)	water temp sensor	1					
6	2.99.06.060160S	GB5787-86	螺栓M6X16	Bolt M6x16	3					
7	2.19.0101.04100	DD300A-0101041	汽缸盖罩盖板纸垫	cylinder head gasket	1					
8	2.23.0116.0110R	DD250E-9-0116011	螺栓M6×30	Bolt M6x30	4					
14	2.22.0101.20200	DD262MP-0101202	O形圈 Φ28×2.5	(O-ring Φ28×2.5)	2					
15	2.99.26.060120R	GB/T5787-86	螺栓M6×12	(Bolt M6×12)	4					
16	2.20.0101.50020	DD250E-0101500	火花塞CR6HSA	(NGK)	2					
17	2.19.0101.00108	DD300A-0101024	汽缸盖罩 (亚光黑)	(Cover, cylinder head)	1					

18	2.19.0101.04200	DD300A-0101042	气缸盖罩盖板	cylinder plate	1					
19	2.22.0101.00300	DD262MP-0101003	气缸盖罩密封垫片	(packing ,head cover)	1					
20	2.20.0101.0040R	DD250E-0101004A	气缸盖罩连接螺钉	(Connect screw of cover)	4					
21	2.20.0101.0050R	DD250E-0101005B	气缸盖螺母M8	(Nut, hex M8) 4	8					
22	2.20.0101.0060R	DD250E-0101006A	平垫圈8	(Washer 8)	8					
23	2.22.0101.00700	DD250E-0101007A	进气门	(Valve, in)	2					
24	2.22.0101.00800	DD250E-0101008A	排气门	(Valve, ex)	2					
25	2.20.0101.00900	DD250E-0101009B	气门弹簧上座圈	(Retainer, valve spring)	4					
26	2.20.0101.01100	DD250E-0101011A	气门弹簧下座圈	(Seat, valve spring outer)	4					
27	2.20.0101.01200	DD250E-0101012	气门内弹簧	(Spring, valve inner)	4					
28	2.30.0101.01300	DD150E-4-0101013	气门外弹簧	(Spring, valve outer)	4					
29	2.20.0101.01400	DD250E-0101014B	气门锁夹	(Cotter, valve)	8					
30	2.20.0101.02000	DD250E-0101120A	气门导管油封	(Seal, valve stem)	4					
31	2.20.0101.0150R	DD250E-0101015A	排气管双头螺柱8X45	(Bolt stud of escape pipe)	2					
32	2.24.0101.0150R	DD250E-9A-0101015	排气管双头螺栓M8×55	(Bolt stud of escape pipe)	2					
33	2.20.0101.0170R	DD150E-4-0101017	螺栓M6×134	(Bolt M6×145)	2					
34	2.20.0101.01900	DD250E-0101019A	长定位套10×28	(Pin, dowel (10×28))	4					
35	1.99.43.060000N	GB6177-86	六角法兰螺母 M6(不锈钢)	(Nut M6-ZnD)	4					
36	2.41.0101.02200	DD244MI-0101-022	防改装螺栓 M6×25	Bolt M6x25	4					
37	2.27.0101.02308	DD300E-6-0101023	气缸盖罩左侧盖(亚光黑)	(Side cover, cylinder head)	1					
39	2.33.0101.10700	DD150E-8-0101107	内六角螺塞	(Bolt stops)	2					
40	1.99.26.0607500	GB5787-86	六角法兰面螺栓M6×75	Bolt M6x75	1					
42	2.23.0101.10100	DD250E-9-0101101	O形圈Φ15.2X1.5	(O-ringΦ15.2x2.5)	2					
43	2.20.0103.1090R	DD250E-0103109	皮管套	(Rubber pipe cover)	1					
44	2.27.0101.02708	DD300E-6-0101027	气缸盖罩右侧盖(亚光黑)	(Side cover, cylinder head)	1					

E-2: 气缸体总成 (Cylinder assembly)

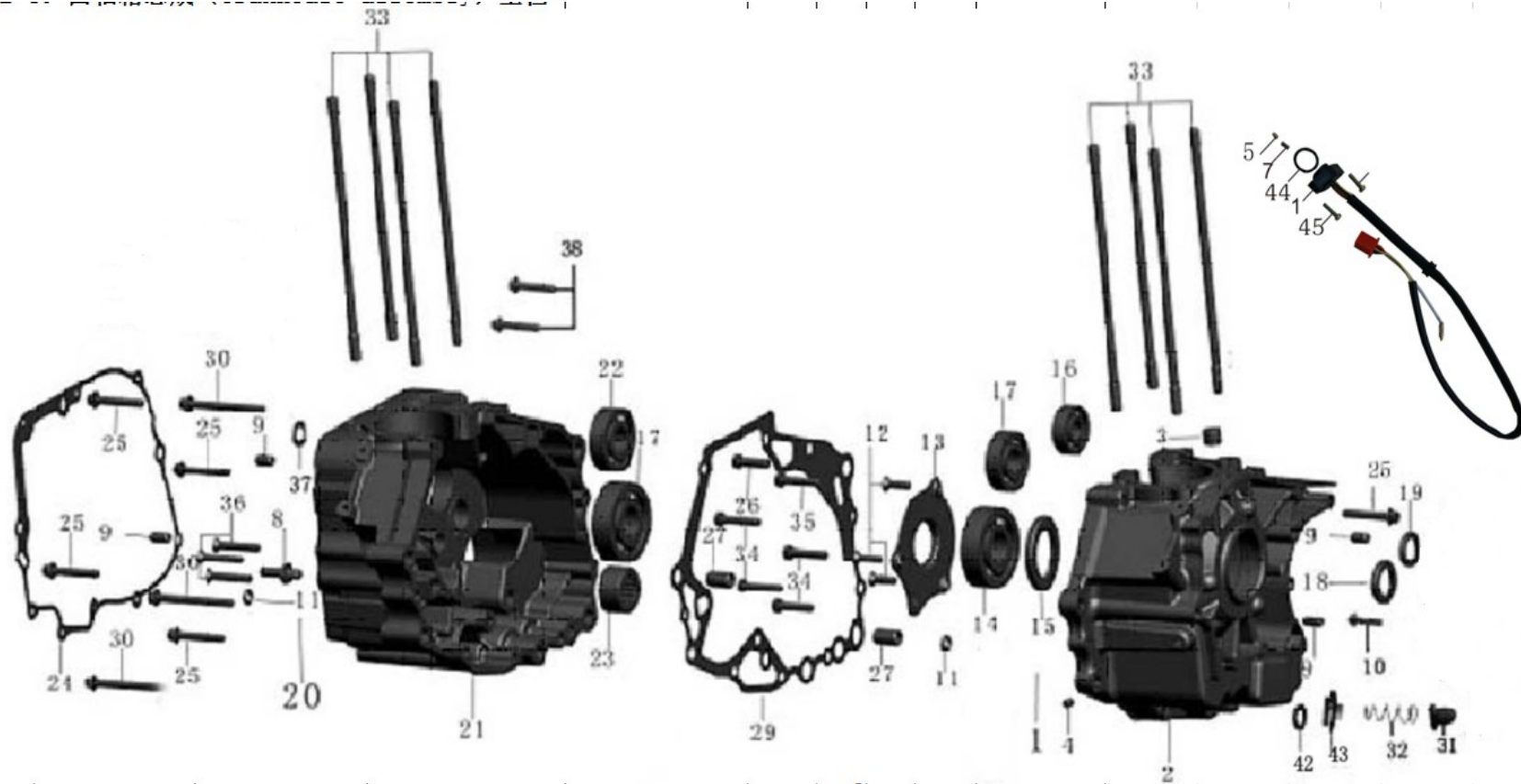


E-2: 气缸体总成 (Cylinder assembly)

序号	物料编码	零件图号	物料名称	物料名称	用量	设计 变更	设变 时间	单价	单价	备注
NO.	PART CODE	drawing ref.code	Description	Description	Quantity	Desig n chang	Date	RMB	USD	Remark
1	2.41.0102.10010	DD244MI-0102100	汽缸体组件	Cylinder comp	1					
2	2.23.0102.00410	DD253MM-0102004	缸体进水管 (新)	Hose, cylinder	1					
3	2.23.0101.0250S	DD250E-9-0101025	水管接头	Hose connector	1					
4	2.23.0101.0240S	DD250E-9-0101024	水管接头压板	plate	1					
5	2.99.26.060120S	GB5787-86	螺栓M6×12 (度铬)	Bolt M6×12	1					
6	2.23.0101.02600	DD250E-9-0101026	O形圈Φ17×2	O- ring Φ17×2	1					
7	2.20.0101.10300	DD250E-0101103A	O形圈Φ10×1.6	O- ring Φ10×1.6	4					
8	2.23.0117.01000	DD250E-9-0117010	管夹 (Φ27)	Hose clip	2					
9	2.20.0102.00100	DD250E-0102001	定位销8×14	Pin, dowel (8×14)	2					
10	2.25.0102.00200	DD300E-0102002	气缸下垫片	Gasket, cylinder	1					
11	2.41.0102.00300	DD125E-8-0102003	气缸上垫片	Gasket, cylinder head	1					
12	2.23.0102.00600	DD250E-9-0102006	定位销Φ10×10	Pin, Φ10×10	4					
13	2.20.0101.01600	DD250E-0101016A	定位销Φ10×16	(Pin, dowel (Φ10×16))	2					
14	2.26.0117.00500	DD250E-6-0117005	节温器进水管弹簧 (长)	inlet hose spring	1					

E-3: 曲轴箱总成 (Crankcase assembly) 空档

--	--	--	--	--	--



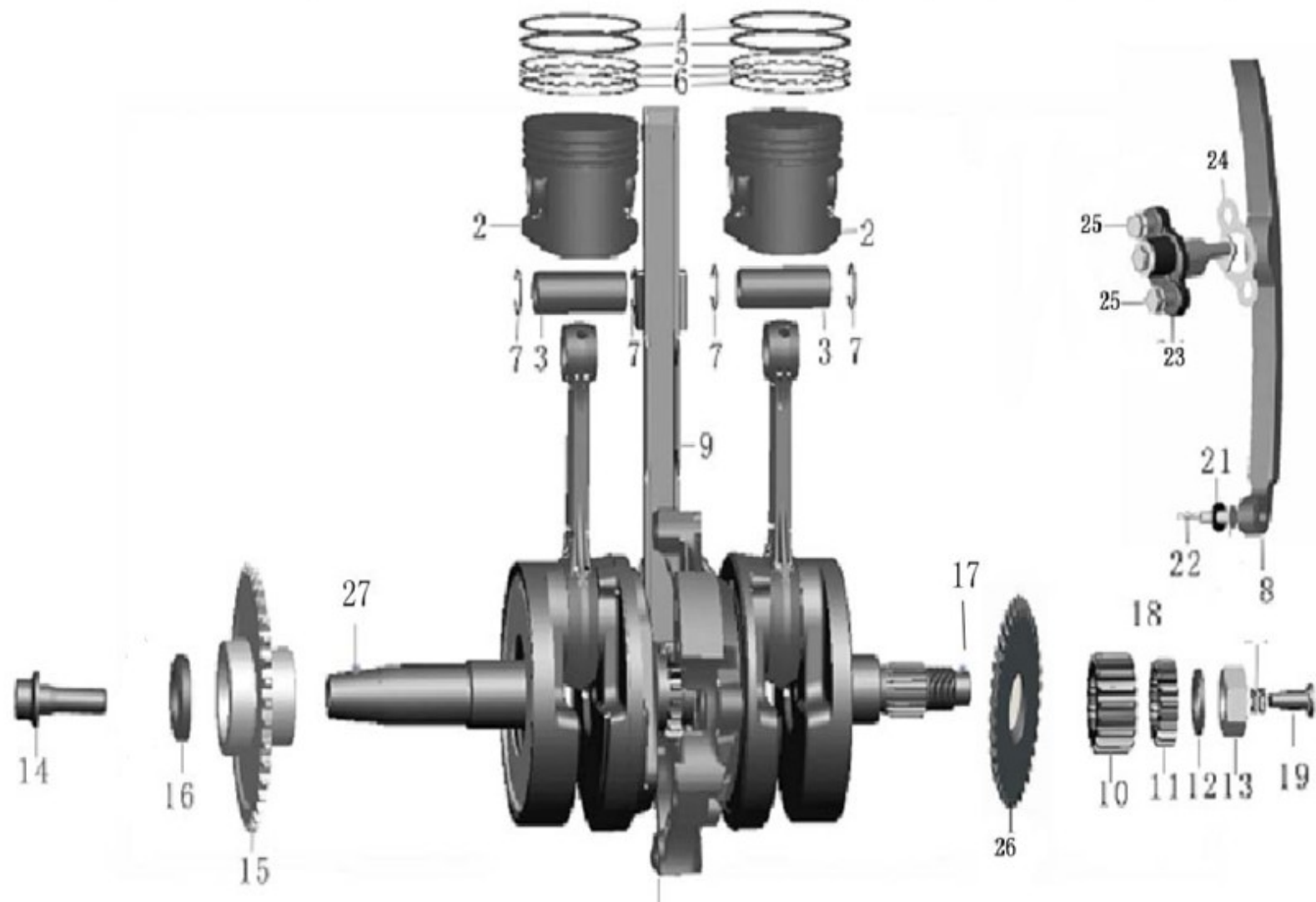
E-3: 曲轴箱总成 (Crankcase assembly) 空档

序号	物料编码	零件图号	物料名称	物料名称	用量	设计 变更	设计 时间	单价	单价
----	------	------	------	------	----	----------	----------	----	----

NO.	PART CODE	drawing ref.code	Description	Description	Quantity	Design chang	Date	RMB	USD
1	2.20.0103.17040	DD250E-0103170C	档位显示器	transmission indicator	1				
2	2.33.0103.1904C	DD247MJ-0103190B	左曲轴箱体（湿式）亚光黑	Left crankcase	1				
3	2.20.0103.10100	DD250E-0103101	大闷头 φ14	Big head	1				
4	2.20.0103.10200	DD250E-0103102	小闷头 φ6	small head	1				
5	2.20.0114.61100	DD250E-0114611	指示器触点	transmission point	1				2.20.0014
6	2.20.0103.10700	DD250E-0103107A	发动机输出线护套	Outlet jacket	1				
7	2.20.0114.61200	DD250E-0114612	指示器触点弹簧	transmission point spring	1				
8	2.20.0103.02200	DD250E-0103022A	顶柱	Pin, shift	1				
9	2.20.0102.00100	DD250E-0102001	定位销 φ8×14	Pin φ8×14	4				
10	1.99.24.0603500	GB/T5783-86	六角头螺栓M6×35	Bolt M6X35	1				
11	2.20.0103.11100	DD250E-0103111A	O型圈6×3	O-ring (6×3)	2				
12	2.99.05.060160R	GB819-85	螺钉M6×16	Screw M6×16	3				
13	2.20.0103.12000	DD250E-0103120	通油盘	oil Plate	1				
14	2.99.70.0630500	GB/T276-94 6305/P6	轴承6305/P6	Bearing 6305/P6	2				
15	2.20.0103.13000	DD250E-0103130	油封35×52×7	Oil seal(35×52×7)	1				
16	2.99.70.0602200	GB/T276-94 6202-Z/P6	轴承6202-Z/P6	Bearing 6202-Z/P6	1				
17	2.20.0103.14010	DD250E-0103140A	轴承 22×47×14-NTN	Bearing 6204-RS/P6	1				
18	2.20.0103.15000	DD250E-0103150	油封 22×34×7 (VI)	Oil seal(22×34×7)	1				
19	2.20.0103.16000	DD250E-0103160	油封11.6×24×10	Oil seal(11.6×24×10)	1				
21	2.33.0103.21028	DD247MJ-0103210	右曲轴箱体（亚光黑）247-253	Right crankcase	1				
22	2.99.70.0630420	GB/T276-94	轴承 6304/P6-NTN	Roller bearing 6304/P6	1				
23	2.20.0103.22010	DD250E-0103220A	轴承 NK152312-NTN	Needle-bearing HK152312	1				
24	2.22.0103.00110	DD262MP-0103001	右曲轴箱盖纸垫（石棉平衡轴）	Gasket, right crankcase cover	1				
25	2.20.0112.0010S	DD250E-0112001A	螺栓M6×40	Bolt M6×40	5				
26	2.30.0103.0080R	DD150E-4-0103008	螺栓M6×28	Bolt M6×28	1				

27	2.20.0103.00500	DD250E-0103005A	定位套Φ12×20	Pin 12×20	2				
29	2.22.0103.00730	DD262MP-0103007A	箱体纸垫 石棉	Gasket, crankcase	1				
30	2.20.0108.0060S	DD250E-0108006A	螺栓M6×65	Bolt M6×65	3				
31	2.52.0103.09200	DD150E-2-0103092	机油滤网组件	Oil filter net	1				
32	2.19.0112.00400	DD300A-0112004	机油滤网弹簧	Oil filter net spring	1				
33	2.30.0103.01500	DD150E-4-0103015	气缸盖双头螺柱	Bolt, cylinder head stud	8				
34	2.20.0103.0160R	DD250E-0103016A	螺栓 M8×1×35	Bolt M8x1x35	4				
35	2.20.0103.0230R	DD250E-0103023	螺栓M7×25	Bolt M7×25	1				
36	2.99.05.060320R	GB819-85 M6×32	螺钉M6×32-ZnD	Screw M6×32-ZnD	3				
37	2.22.0103.02500	DD262MP-0103025	O型圈 φ8×3(丙胶)	O ring	1				
38	2.20.0113.0010S	DD250E-0113001	螺栓 M6×45	Bolt M6X45	2				
42	2.99.70.0630110		轴承 6301/P53(氮化)	Bearing	2				
43	2.90.0101.01800	0101018	气门盖O形密封圈	O ring	1				
44	2.90.0100.08300	JH70.20108	气门盖	Valve cap	1				
45	2.20.0103.17200	GB/T3452.1	档位显示器O形圈	transmission O ring	1				
46	2.99.04.0401800	GB/T818-2000	螺钉M4X18	Screw M4X18	2				

E-4: 曲轴连杆总成 (Crankshaft connecting rod piston assembly)

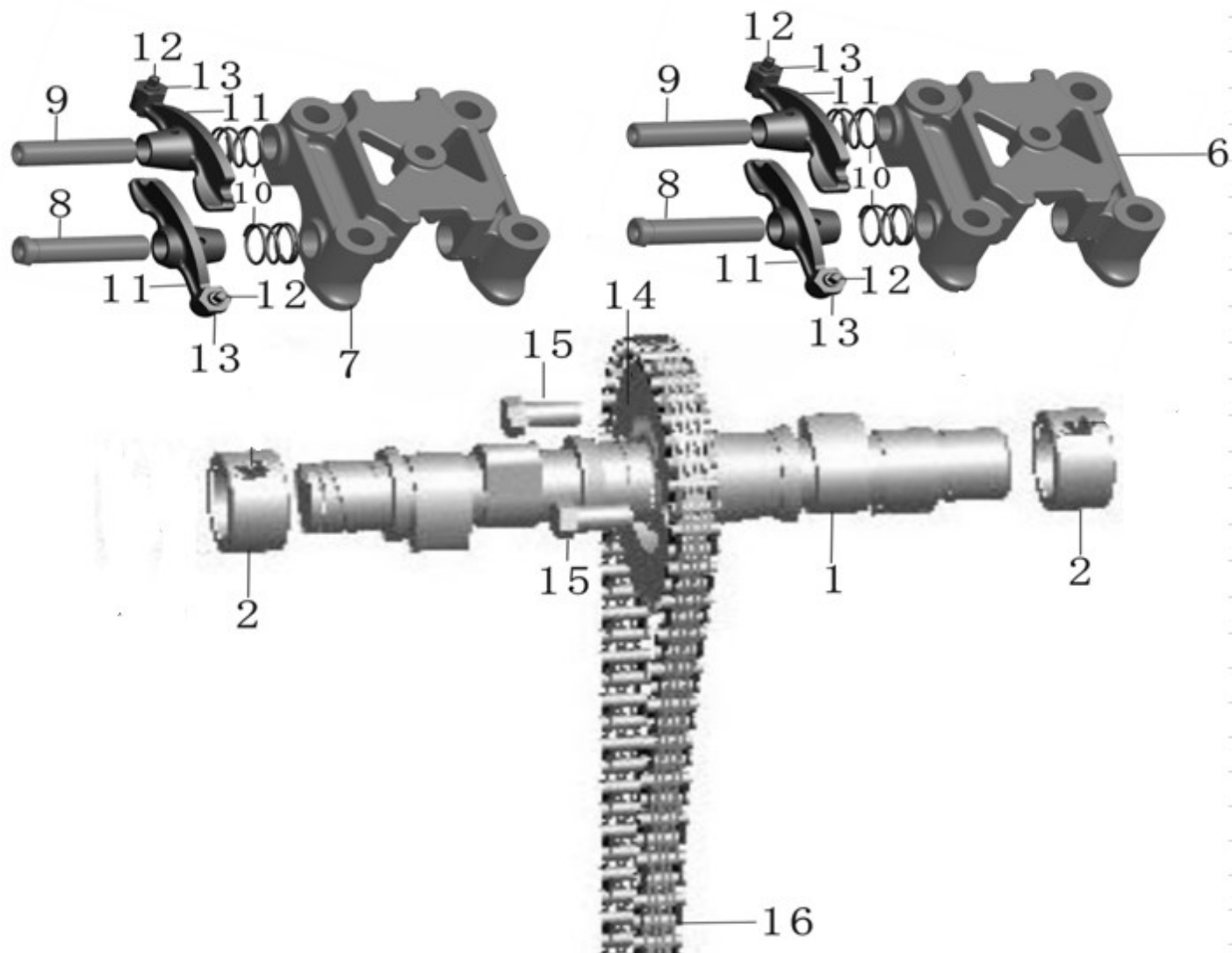


E-4: 曲轴连杆总成 (Crankshaft connecting rod piston assembly)

序号	物料编码	零件图号	物料名称	物料名称	用量	设计 变更	设变 时间	单价	单价	备注
NO.	PART CODE	Old drawing ref.code	Description	Description	Quantity	Desig n chang	Date	RMB	USD	Remark
1	2.30.0104.10040	DD247FMJ-0104100	曲轴连杆组件(平衡轴)	Crankshaft comp	1					
2	2.40.0104.20100	DD125E-0104201	活塞	(piston)	2					
3	2.40.0104.20200	DD125E-0104202	活塞销	(Pin, piston)	2					
4	2.40.0104.20310	DD125E-0104203	第一道活塞环	(1st piston ring)	2					
5	2.40.0104.20410	DD125E-0104204	第二道活塞环	(2nd piston ring)	2					
6	2.40.0104.21000	DD125E-0104210	组合油环	(Oil seal set)	2					
	2.40.0104.21110	DD125E-0104211	涨环	Ring set	1					
	2.40.0104.21210	DD125E-0104212	刮片	Ring set	1					
7	2.30.0104.20500	DD150E-4-0104205	活塞销孔挡圈	Clip, piston pin	4					
8	2.30.0104.32000	DD247FMJ-0104320A	张紧板组件	chain tensioner plate set	1					
9	2.30.0104.00110	DD150E-4-0104001	链条导向板	Guide, cam chain	1					
10	2.30.0104.00200	DD150E-4-0104002A	初级传动齿轮	Gear, primary drive	1					
11	2.33.0104.00300	DD150E-8-0104003	机油泵驱动齿轮	Gear, oil pump drive	1					
12	2.20.0104.00400	DD250E-0104004A	弹性垫圈(小)	Washer, lock	1					
13	2.20.0104.0050R	DD250E-0104005A	六角螺母M16×1	Nut, hex M16x1	1					
14	2.20.0104.0060R	DD250E-0104006C	曲轴螺栓	Bolt, rotor setting	1					
15	2.17.0104.00700	DD269FMQ-0104007	链轮(楔块式)	Sprocket	1					
16	2.20.0104.00800	DD250E-0104008	垫圈12	Washer 12	1					
17	2.20.0104.00900	DD250E-0104009A	销Φ2×14	Pin Φ2×14	1					
18	2.20.0104.01100	DD250E-0104011A	出油管弹簧	Spring, oil through	1					
19	2.20.0104.01200	DD250E-0104012A	出油管	Through oil	1					
21	2.20.0114.50200	DD250E-0114502A	垫圈6	Washer 6	1					
22	2.20.0104.01600	DD250E-0104016B	弹性销	(Pin, lock)	1					

23	2.30.0104.30120	DD247FMJ-0104300A	张紧器组件	Chain tensioner assy.	1					
24	2.30.0102.00400	DD247FMJ-0102004	张紧器纸垫	gasket,chain tensioner	1					
25	2.99.06.060160S	GB5787-86	螺栓M6*16	BoltM6*16	2					
26	2.22.0104.11602	DD262MP-0104116	平衡轴主动齿(富川)	Balance gear	1					
27	2.20.0104.11200	DD250E-0104112A	飞轮销	Flywheel pin	1					

E-5: 配气机构总成 (Allot air organization assembly)





附件：配气机构总成 (AIR ORGANIZATION ASSEMBLY)

序号	物料编码	零件图号	物料名称	物料名称	用量	设计 变更	设变 时间	单价	单价	备注
NO.	PART CODE	drawing ref.code	Description	Description	Quantity	Desig n chang	Date	RMB	USD	Remark
1	2.20.0105.10120	DD250E-0105101B	凸轮轴(滚动轴承用)	Camshaft	1					
2	2.99.70.0630120		轴承 6301/P53(氮化)-NTN	Bush, camshaft	2					
6	2.41.0105.20000	DD244MI-0105200	左凸轮轴承盖组件(滚动轴承用)	Holder comp, camshaft M8	2					
7	2.41.0105.40000	DD244MI-0105400	右凸轮轴承盖组件(滚动轴承用)	Holder, camshaft	2					
8	2.23.0105.20200	DD250E-9-0105202	摇臂轴(长)	(Shaft, valve rocker arm)	2					
9	2.20.0105.20200	DD250E-0105202A	摇臂轴	Shaft, valve rocker arm	2					
10	2.20.0105.20300	DD250E-0105203A	摇臂轴定位弹簧	Spring, rocker arm side	4					
11	2.20.0105.20400	DD250E-0105204A	气门摇臂	Arm, valve rocker	4					
12	2.20.0105.20500	DD250E-0105205A	气门调正螺钉	Screw, tappet adjusting	4					
13	2.20.0105.20600	DD250E-0105206A	气门调正螺母	Nut, tappet adjusting	4					
14	2.20.0105.00130	DD250E-0105001	凸轮轴链轮(重庆)	Sprocket, cam	1					
15	2.20.0105.00200	DD250E-0105002A	链轮紧固螺栓M7×13	Bolt M7×13	2					
16	2.30.0105.30010	DD150E-4-0105300	正时齿形链	Chain, cam	1					

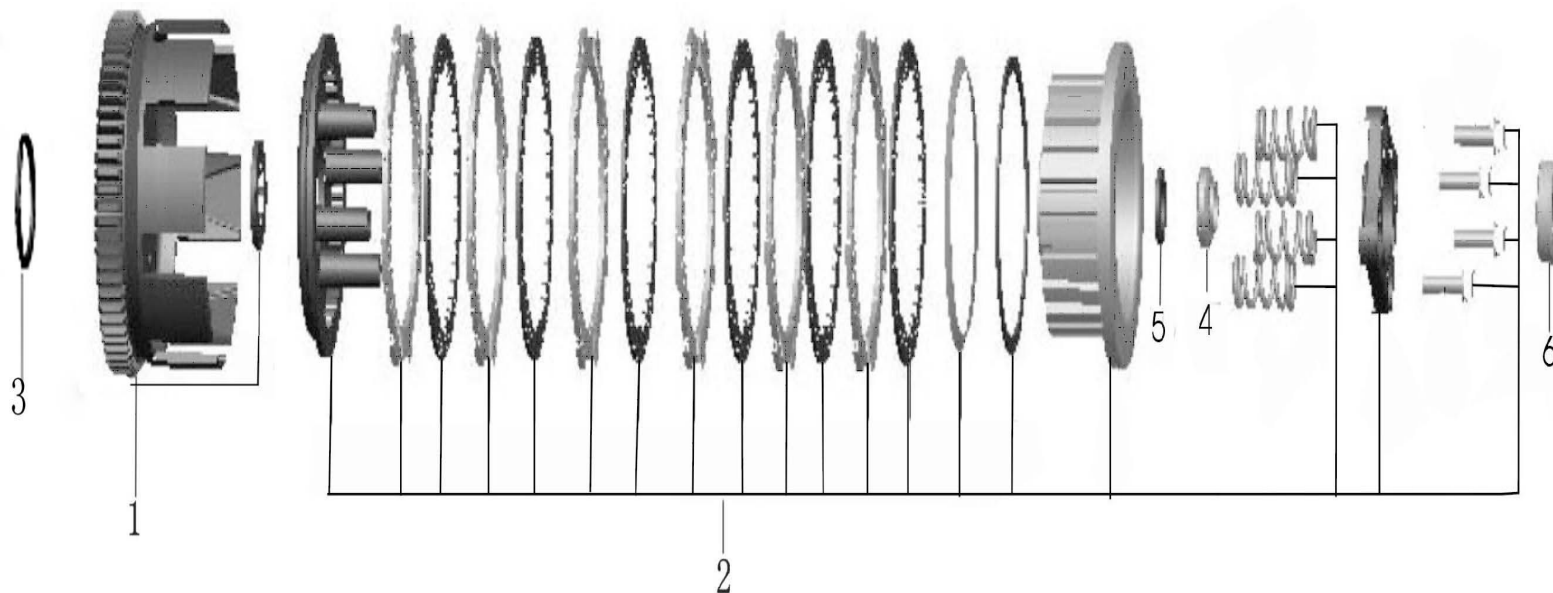
E-6: 机油泵总成 (Oil pump assembly)



E-6: 机油泵总成 (Oil pump assembly)

序号	物料编码	零件图号	物料名称	物料名称	用量	设计 变更	设变 时间	单价	单价	备注
NO.	PART CODE	drawing ref.code	Description	Description	Quantity	Desig n chang	Date	RMB	USD	Remark
1	2. 22. 0106. 00010	DD262MP-0106000A	机油泵总成	Pump assy,oil	1					

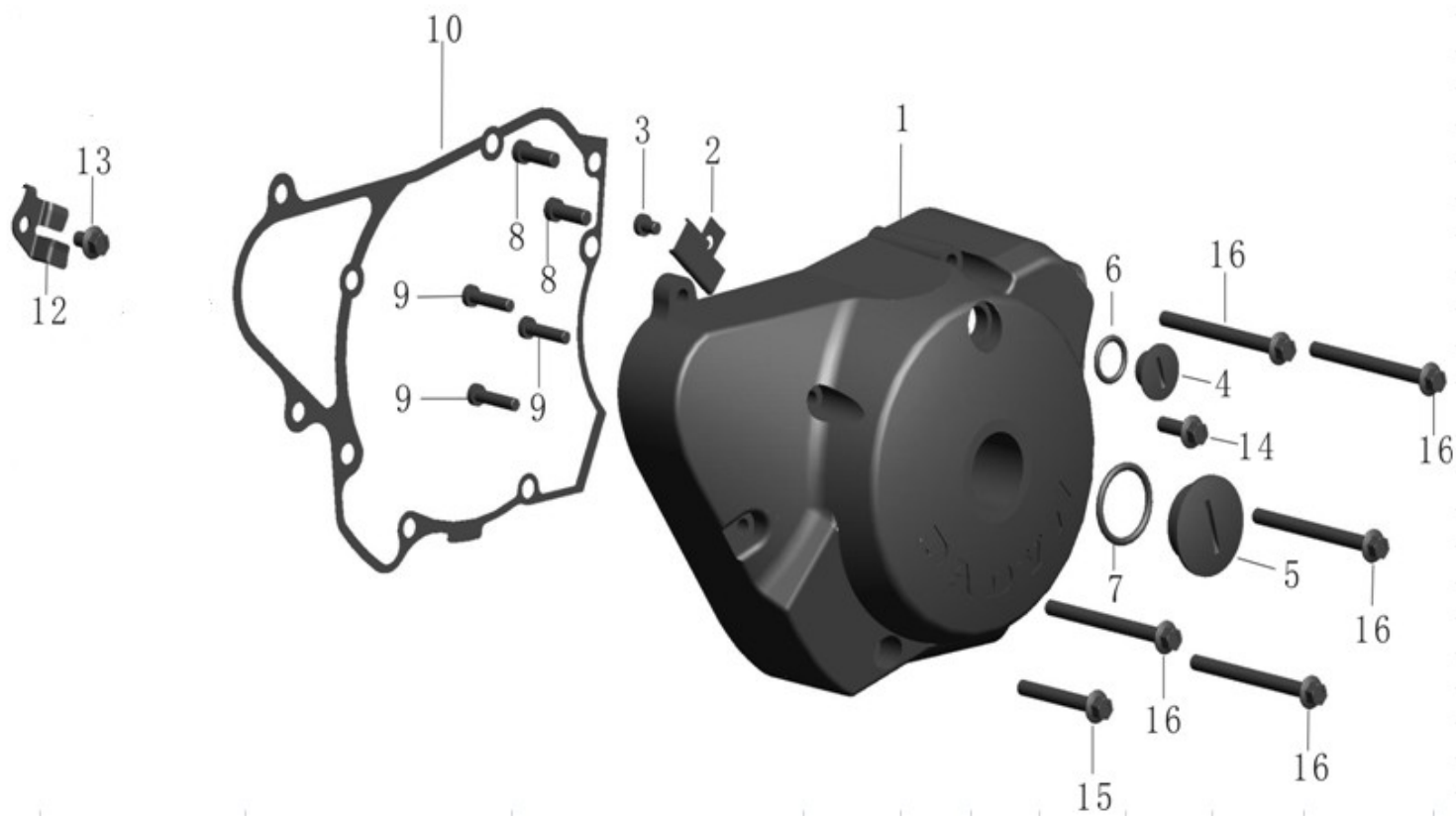
E-7: 离合器总成 (Clutch assembly)



E-7: 离合器总成 (Clutch assembly)

序号	物料编码	零件图号	物料名称	物料名称	用量	设计 变更	设变 时间	单价	单价	备注
NO.	PART CODE	drawing ref.code	Description	Description	Quantity	Desig n chang	Date	RMB	USD	Remark
1	2.22.0107.11000	DD262MP-0107110	外壳组合 (钢齿)	Outer comp, clutch	1					
2	2.25.0107.12000	DD300E-0107120	中心架组合	Center frame comp	1					
3	2.30.0107.00100	DD150E-4-0107001	垫圈	Washer	1					
4	2.20.0107.00200	DD250E-0107002A	圆螺母	Circular nut	1					
5	2.20.0107.00300	DD250E-0107003A	弹性垫圈 (大)	Washer, thrust	1					
6	2.20.0107.20000	DD250E-0107200A	推力轴承组件	Pushing bearing	1					

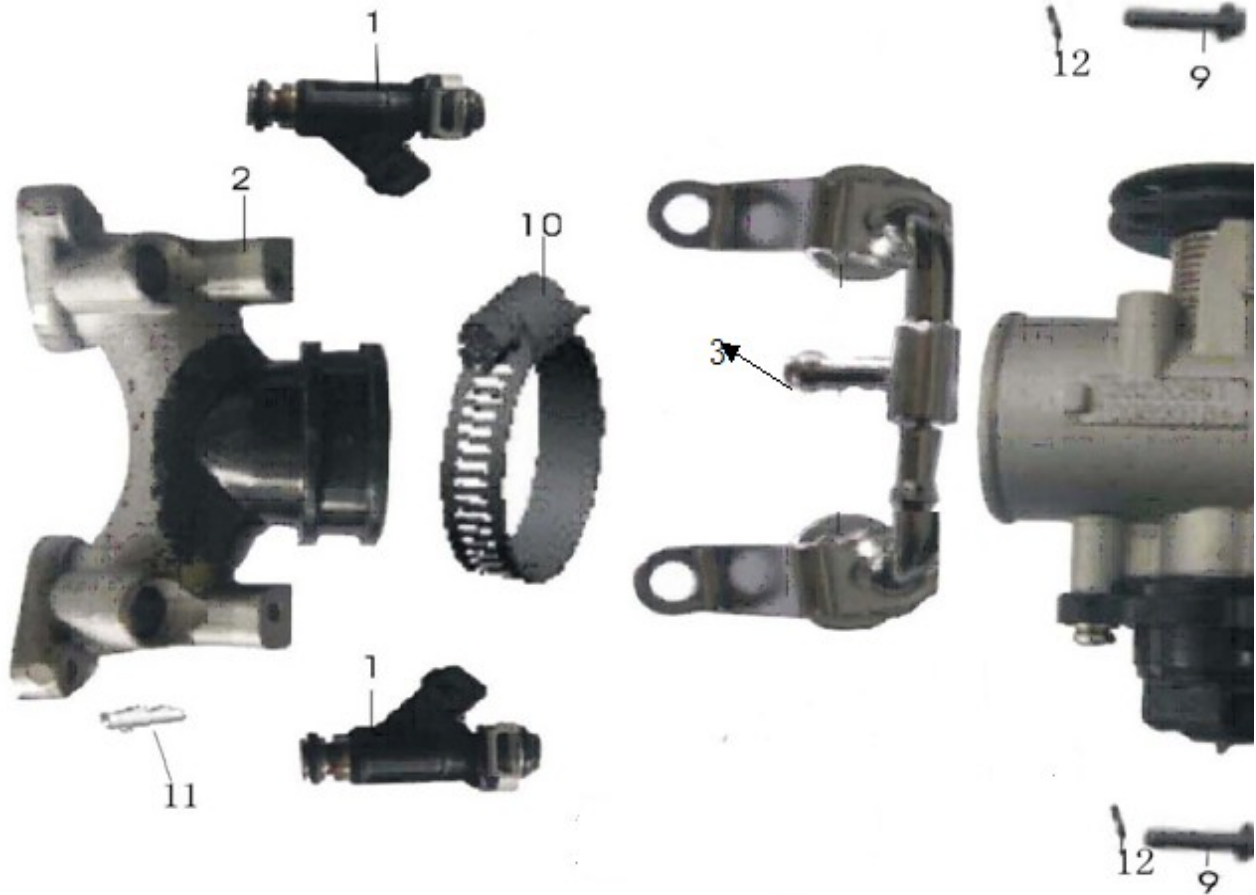
E-8: 左曲轴箱盖总成 (Left crankcase cover assembly)



E-8: 左曲轴箱盖总成 (Left crankcase cover assembly)

序号	物料编码	零件图号	物料名称	物料名称	用量	设计 变更	设变 时间	单价	单价	备注
NO.	PART CODE	drawing ref.code	Description	Description	Quantity	Desig n chang	Date	RMB	USD	Remark
1	2.20.0108.1630S	DD250E-0108101A	左曲轴箱盖(白板)	Cover, left crankcase	1					
2	2.20.0108.1020R	DD250E-0108102A	压线板	Tension Disc	1					
3	2.99.03.050080R	GB70-85 M5×8	内六角螺钉M5×8-ZnD	Screw, hex M5×30-ZnD	1					
4	2.20.0108.1030S	DD250E-0108103A	螺塞M14×1.5	Screw M14×1.5	1					
5	2.20.0108.1040S	DD250E-0108104A	螺塞M30×1.5	Screw M30×1.5	1					
6	2.20.0108.10510	DD250E-0108105A	O形圈 11×3.5	O-ring 11×3.5	1					
7	2.20.0108.10600	DD250E-0108106	O形圈 (25.8×3.1)	O-ring 25.8×3.1	1					
8	2.99.03.060200R	GB70-85 M6×20	内六角螺钉 M6×20-ZnD	Screw, socket M6×20-ZnD	2					
9	2.99.03.050300R	GB70-85 M5×25	内六角螺钉M5×30-ZnD	Screw, socket M5×30-ZnD	3					
10	2.17.0108.00110	DD269FMQ-0108001	左曲轴箱盖纸垫 (非石棉)	Gasket, left crankcase cover	1					
12	2.17.0108.00300	DD269FMQ-0108003	链轮定位板	Plate, starting sprocket setting	1					
13	2.99.24.060100R	GB5783-86	螺栓M6×10-ZnD	Bolt M6×10-ZnD	1					
14	2.20.0108.0040S	DD250E-0108004A	螺栓M6×20	Bolt M6×20	1					
15	2.20.0112.0020S	DD250E-0112002A	螺栓M6×50	Bolt M6×50	1					
16	2.20.0108.0060S	DD250E-0108006A	螺栓M6×65	Bolt M6×65	5					

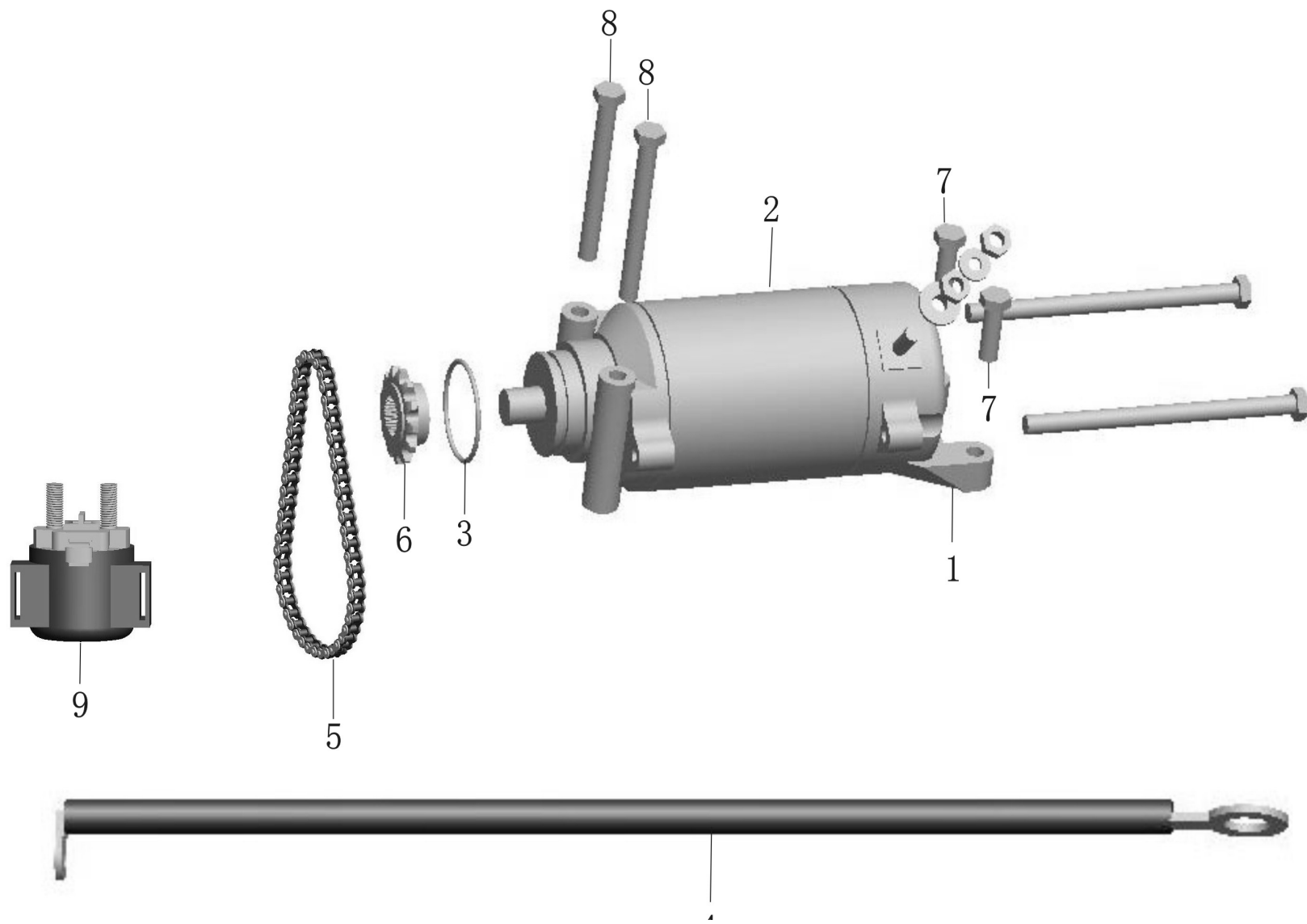
E-9: 电喷总成



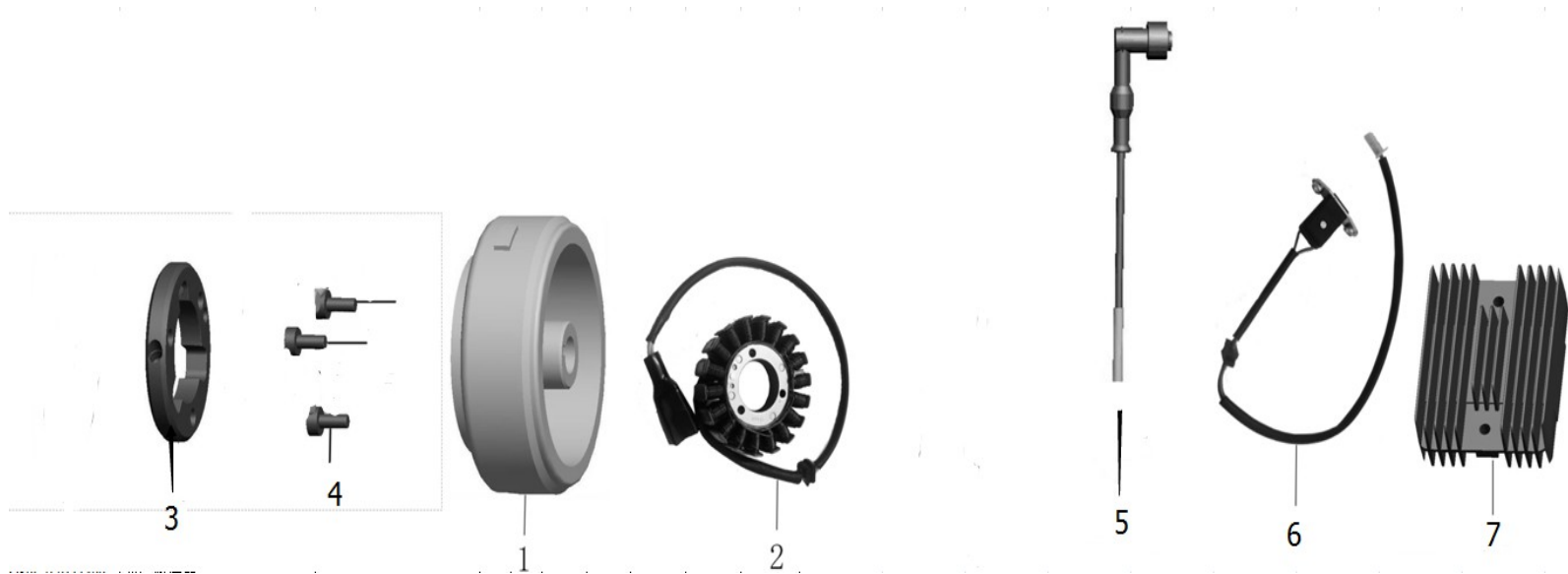
E-9: 电喷总成 (双腔)

序号	物料编码	零件图号	物料名称	物料名称	用量	设计变更
NO.	PART CODE	drawing ref.code	Description	Description	Quantity	Design chang
1	2.41.0118.30000	DD244MI-0118300	喷油器组件	Injector	2	
2	2.41.0118.10000	DD244MI-0118100	进气支管组件 (电喷)	manifold	1	
3	2.41.0118.20000	DD244MI-0118200	固定座总成	holder	1	
5	2.41.0118.40000	DD244MI-0118400	节气门体总成 (28A-1)	throttle body	1	
9	2.99.26.060120S	GB5787-86	螺栓M6X12	bolt M6x12	2	
10	1.01.07.0000100	DD250E-1700001	卡箍Φ48	hook	1	
11	2.40.0101.20500	DD125E-0101205	进气管接头	inlet connector	1	
12	1.99.56	GB93-87	弹性垫圈	seal	2	

E-10: 电起动总成 (Electricity starting assembly)



E-11: 电器系统分总成 (Electrical system)

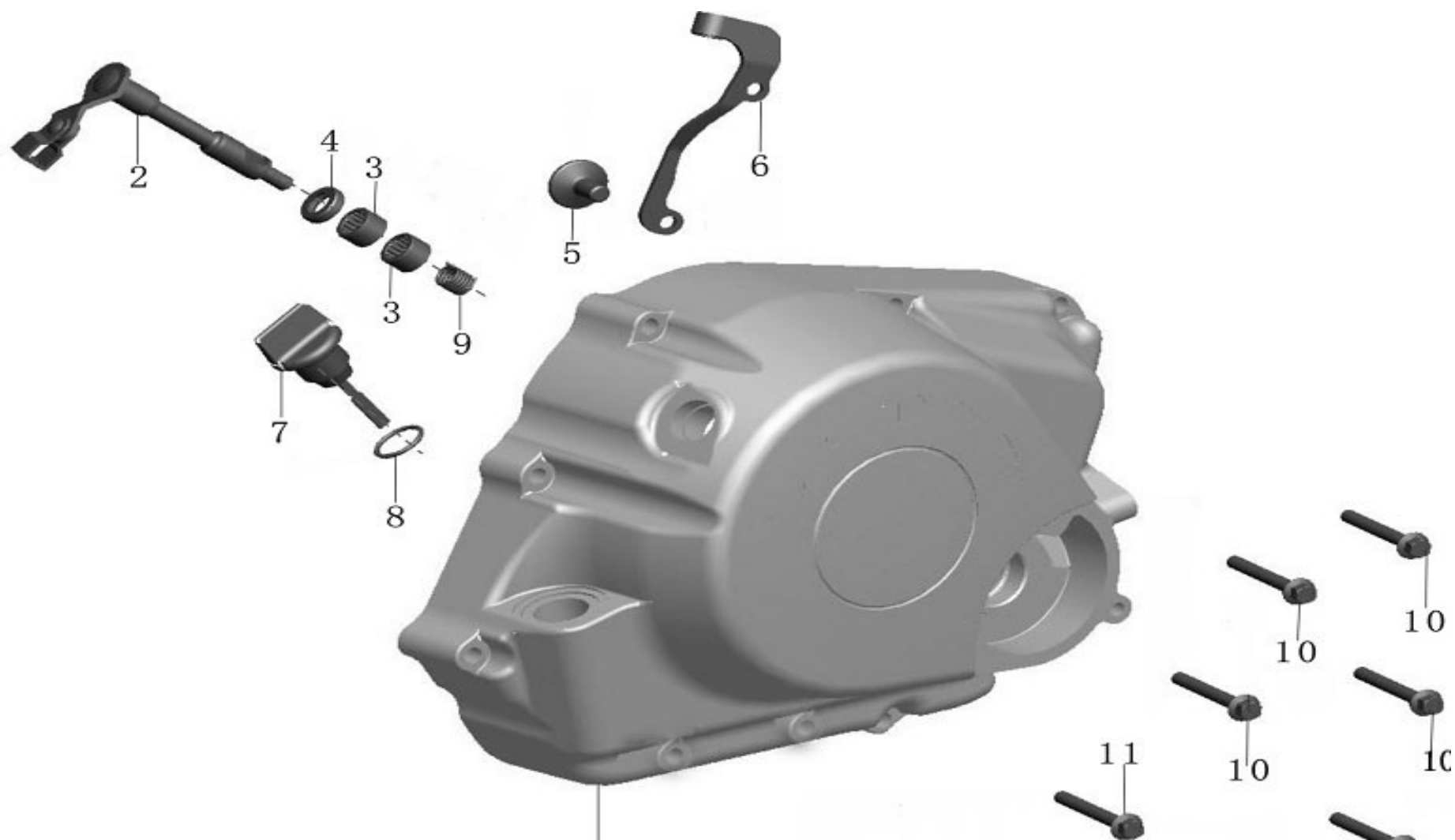


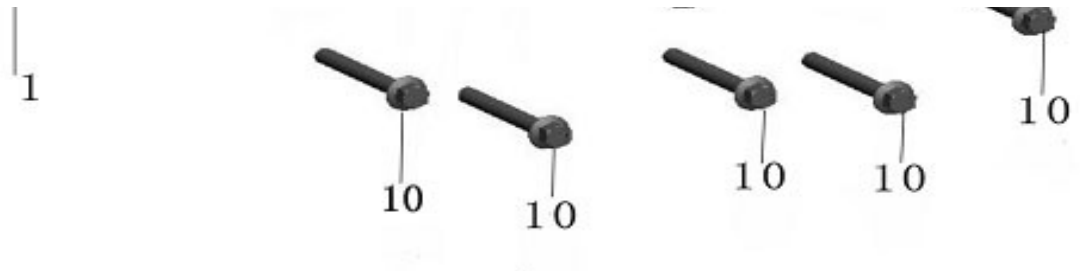
E-11: 电器系统分总成 (Electrical system)

序号	物料编码	零件图号	物料名称	物料名称	用量	设计 变更	设变 时间	单价	单价	备注
NO.	PART CODE	drawing ref.code	Description	Description	Quantity	Desig n chang	Date	RMB	USD	Remark
1	2.41.0111.11000	DD244MI-0111110	飞轮组件	Flywheel comp	1					
2	2.23.0111.12030	DD250E-0111120C	定子分组件(加大)	Stator comp	1					
3	2.17.0111.13000 1.99.03.060160	DD269FMQ-0111130	超越离合器组件 (NC24033/30)	Starting clutch	1					
4	N	GB70-85	内六角圆柱头螺钉M6x16	Screw M6x16	6					
5	2.29.0111.15000	DD300E-6-0111150	传感器分组件 (F11)	Sensor set	1					
6	2.22.0118.00400	DD262MP-0118004	点火线圈组件	starting coil	2					

7	2.30.0111.40000	DD250E-9-0111400	调压整流器	rectifier	1					
---	-----------------	------------------	-------	-----------	---	--	--	--	--	--

E-12: 右曲轴箱盖总成 (Right crankcase cover assembly) 新模具





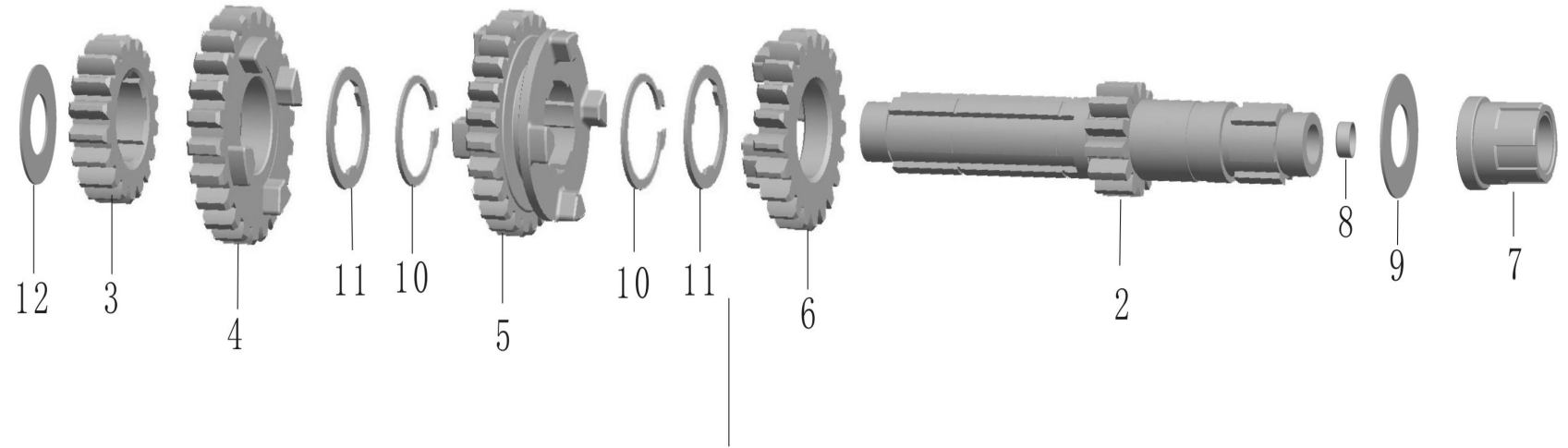
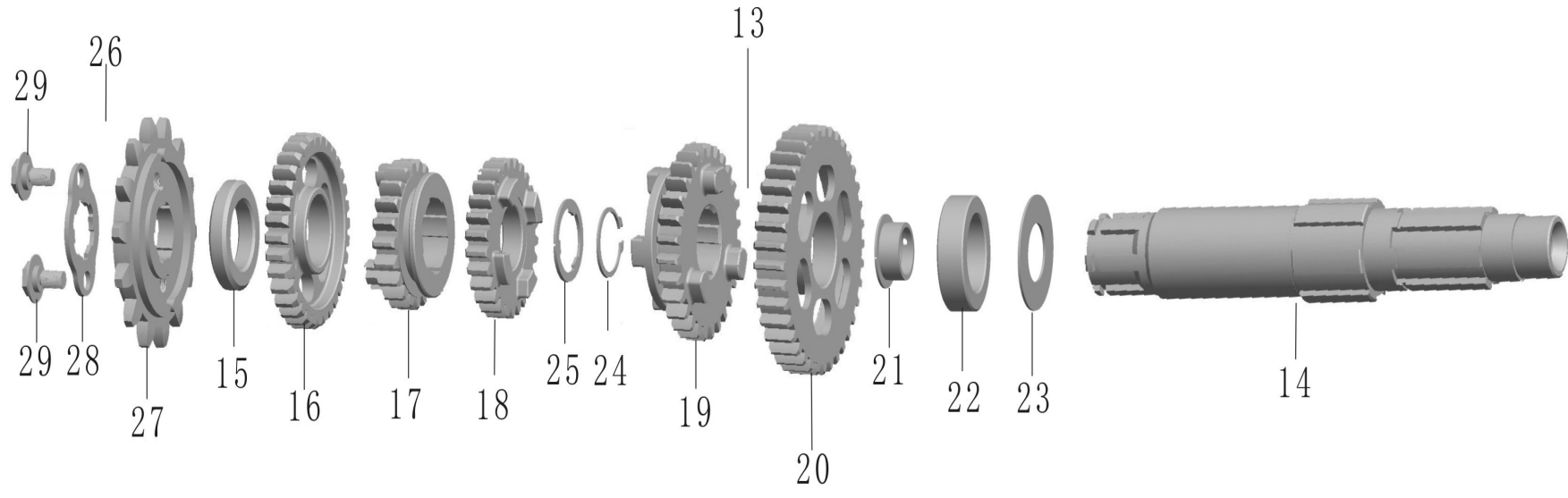
E-12: 右曲轴箱盖总成 (Right crankcase cover assembly) 新模具

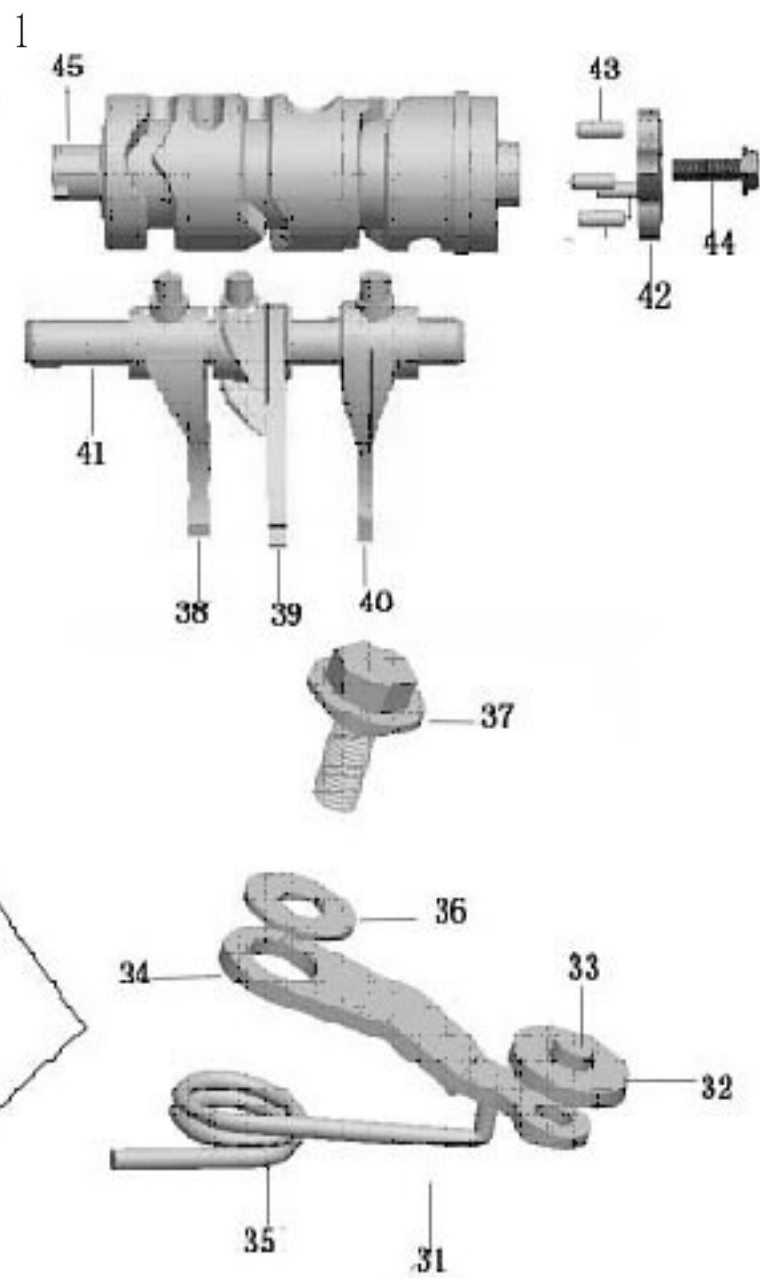
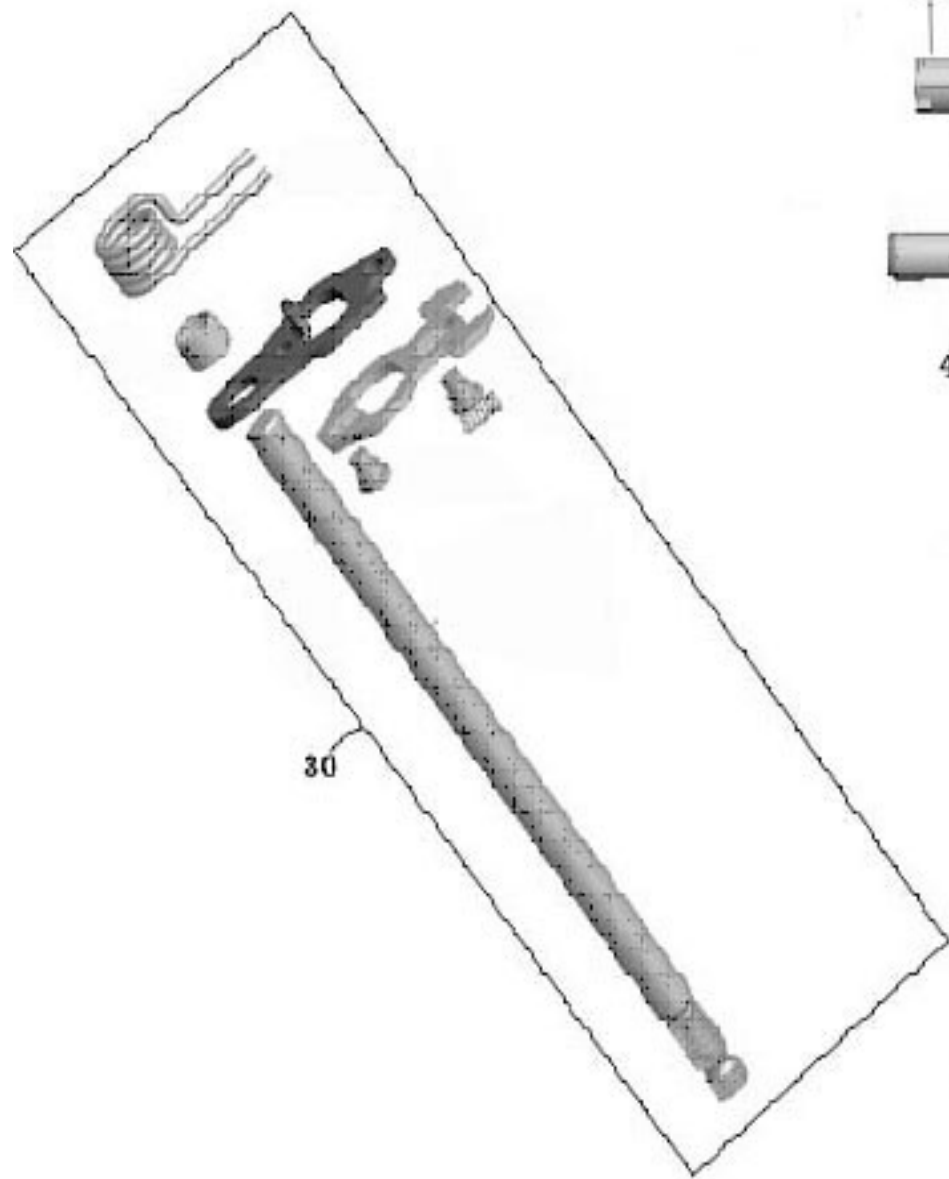
序号	物料编码	零件图号	物料名称	物料名称	用量	设计 变更	设变 时间	单价	单价	备注
NO.	PART CODE	drawing ref.code	Description	Description	Quantity	Desig n chang	Date	RMB	USD	Remark
1	2.20.0112.1020R	DD253MM-0112101A	右曲轴箱盖(DADYW平衡轴)	Cover comp, right crankcase	1					电镀
2	2.20.0112.1100S	DD250E-0112110A	分离杆组件	lever comp, clutch	1					
3	2.20.0112.12000	DD250E-0112120	轴承HK1210	Bearing HK1210	2					
4	2.20.0112.13000	DD250E-0112130	油封12×18×5	Oil seal (12×18×5)	1					
5	2.20.0112.10200	DD250E-0112102A	推盘	Pin, clutch lifter	1					
6	2.20.0112.1031S	DD250E-0112103A	定位钩	Receiver, clutch cable	1					
7	2.20.0112.14000	DD250E-0112140	油尺	Gauge, oil level	1					
8	2.20.0112.14200	DD250E-0112142A	O形密封圈Φ18×3	O- ringΦ18×3	1					
9	2.20.0112.10600	DD250E-0112106A	扭簧	Spring	1					
10	2.20.0112.0010S	DD250E-0112001A	螺栓M6×40	Bolt M6×40	9					
11	2.20.0112.0020S	DD250E-0112002A	螺栓M6×50	Bolt M6×50	1					



单价	单价	备注
RMB	USD	Remark

E-14: 变速器总成 (Transmission assembly)

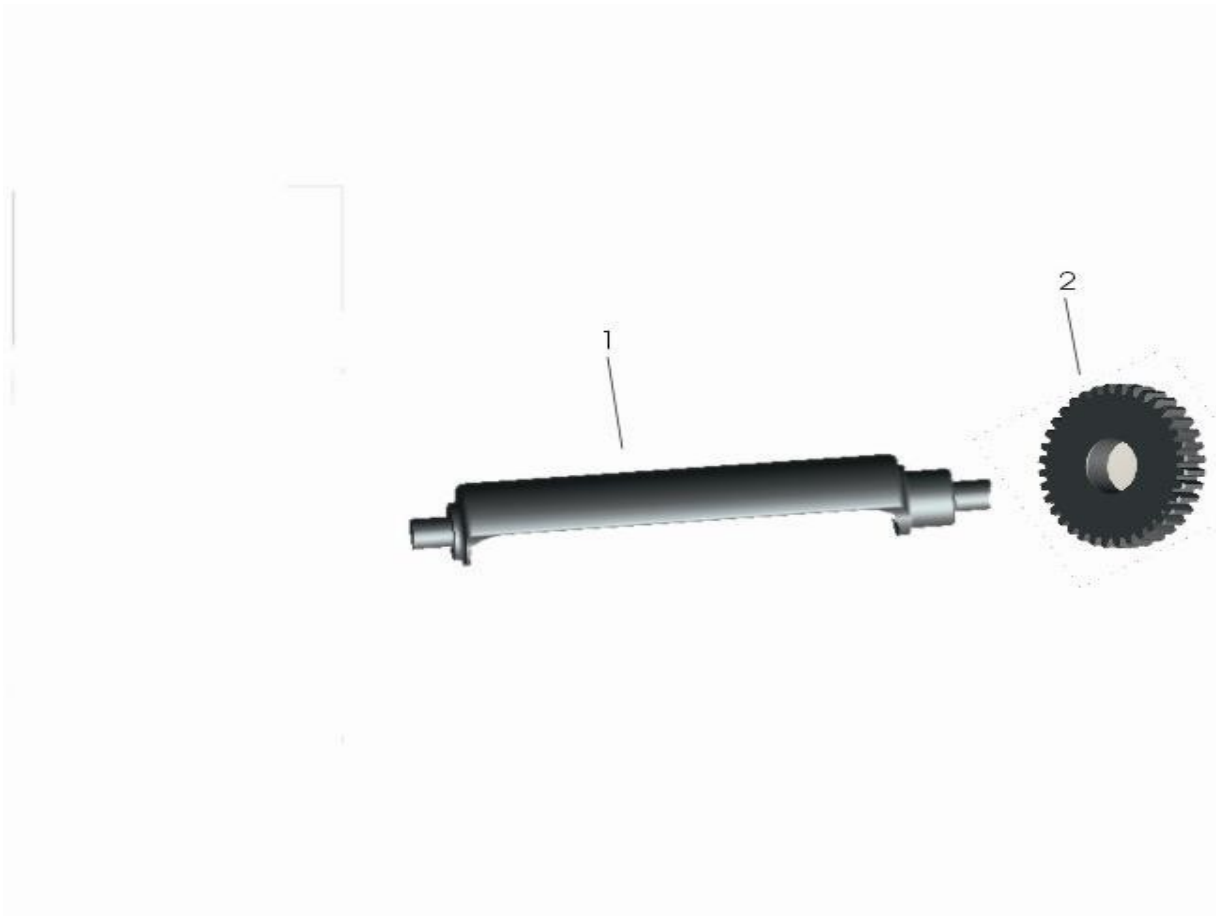




E-14: 变速器总成 (Transmission assembly) (挡显)

序号	物料编码	零件图号	物料名称	物料名称	用量	设计变更	设变时间	单价	单价	备注
NO.	PART CODE	drawing ref.code	Description	Description	Quantity	Design chang	Date	RMB	USD	Remark
1	2.20.0114.10020	DD250E-0114100B	主轴组合	mainshaft	1					
13	2.20.0114.20050	DD250E-0114200E	副轴组合	countershaft	1					
26	2.30.0114.40100	DD150E-4-0114401	副轴链轮组件	countershaft sprocket	1					
27	2.40.0114.40110	DD150E-4-0114401B	副轴链轮 (13T)	Sprocket, counter shaft	1					
28	2.20.0114.40200	DD250E-0114402A	副轴链轮固定板	Plate, fixing	1					
29	2.99.24.060100R	GB5783-86 M6×10	螺栓M6×10/ZnD	Bolt M6×10/ZnD	2					
30	2.20.0114.30020	DD250E-0114300C	换档杆机构 (加长12mm)	Spindle comp, gearshift	1					
31	2.20.0114.50000	DD250E-0114500A	托轮机构	Stopper comp, gearshift drum	1					
32		DD250E-0114511A	托轮	driving wheel	1					
33		DD250E-0114512A	铆钉	screw	1					
34		DD250E-0114513A	托臂	driving wheel arm	1					
35	2.20.0114.50100	DD250E-0114501	扭转弹簧	Spring, shift drum stopper	1					
36	2.20.0114.50200	DD250E-0114502A	垫圈6	Washer 6	1					
37	2.20.0114.5030R	DD250E-0114503A	螺钉M6×12	Screw M6×12	1					
38	2.20.0114.00100	DD250E-0114001A	换档拨叉(左)	Fork, left gearshift	1					
39	2.20.0114.00200	DD250E-0114002A	换档拨叉(中)	Fork, center gearshift	1					
40	2.20.0114.00300	DD250E-0114003A	换档拨叉(右)	Fork, right gearshift	1					
41	2.20.0114.00400	DD250E-0114004	拨叉轴	Shaft, gearshift fork guide	1					
42	2.20.0114.00500	DD250E-0114005A	换档凸轮	Plate, drum stopper	1					
43	2.20.0114.00600	DD250E-0114006A	圆柱销	Pin, gearshift drum	4					
44	2.20.0114.0070R	DD250E-0114007A	螺钉M6×20	Screw M6×20	1					

45	2.20.0114.60020	DD250E-0114601C	换档凸轮鼓	Drum, gearshift	1					
----	-----------------	-----------------	-------	-----------------	---	--	--	--	--	--



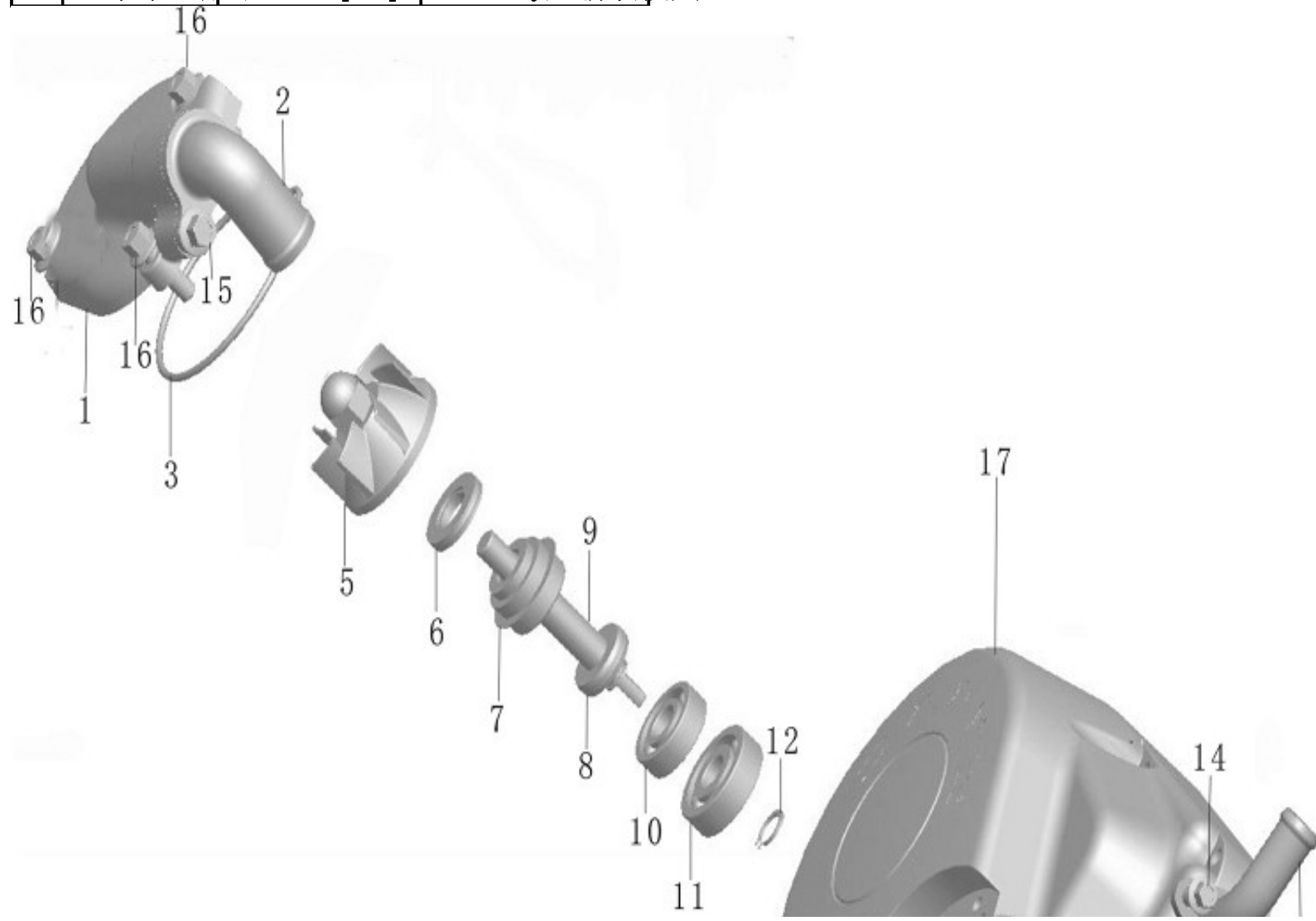
E-15: 平衡轴总成

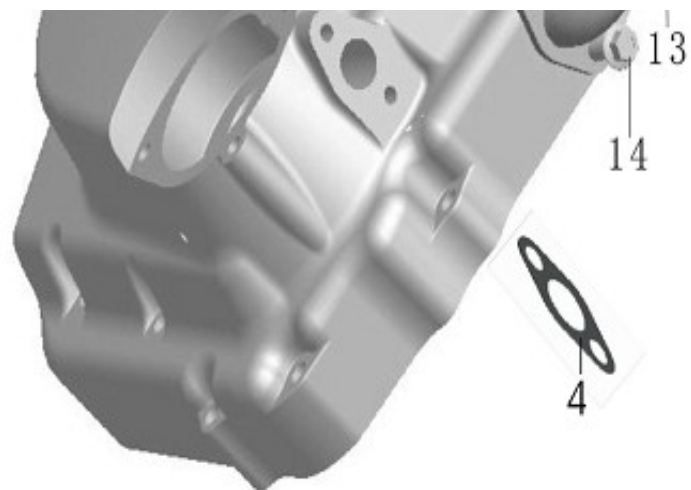
序号	物料编码	零件图号	物料名称	物料名称	用量
NO.	PART CODE	Old drawing ref.code	Description	Description	Quantity
1	2.33.0104.40000	DD150E-8-0104400	平衡轴组件	balance shaft	1
2	2.22.0104.40202	DD262MP-0104402	平衡轴被动齿(富川)	balance shaft gear	1



设计变更	设变时间	单价	单价	备注
Design chang	Date	RMB	USD	Remark

E-16: 水泵总成 (Water pump assembly) - 新改模具



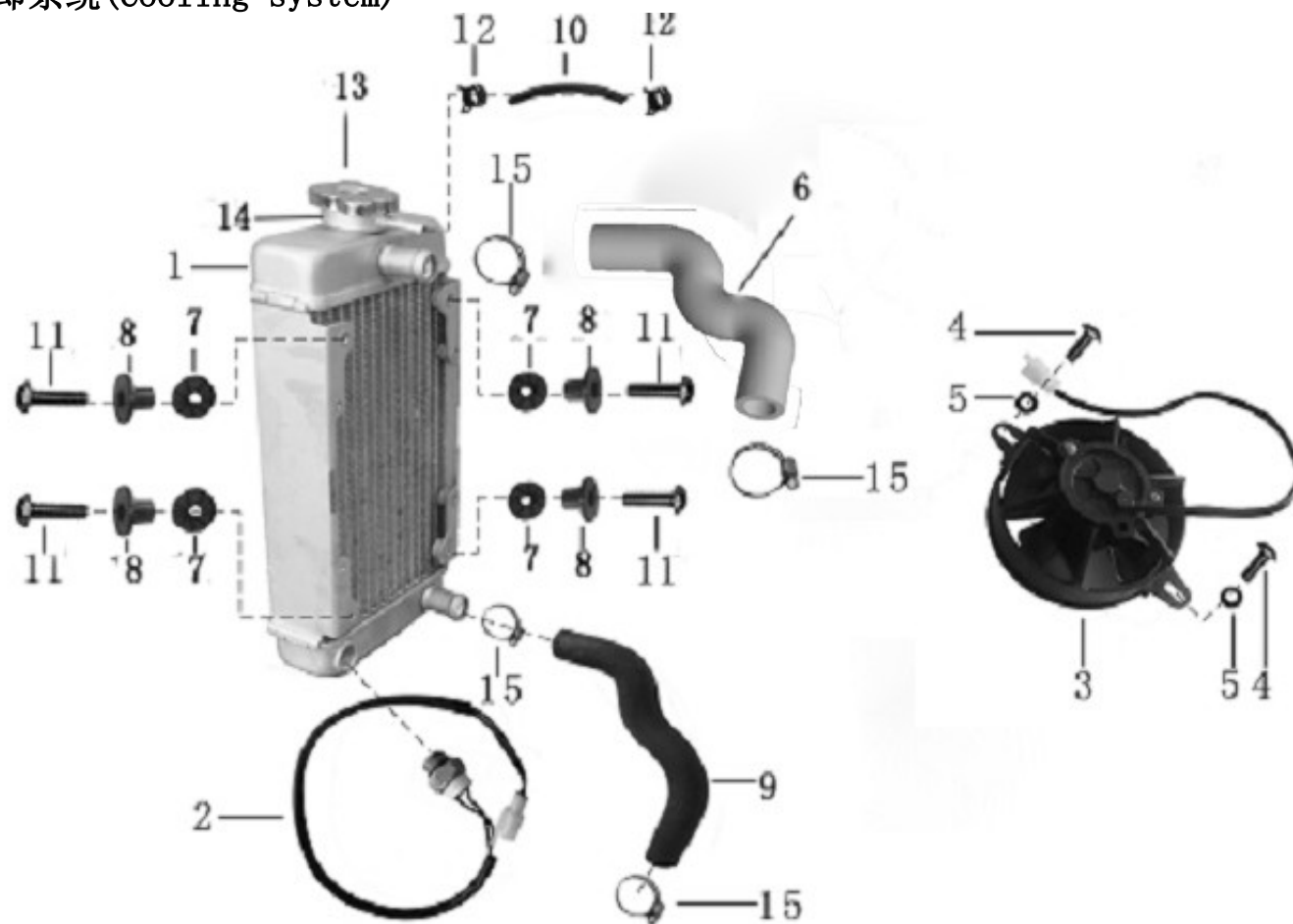


E-16: 水泵总成(Water pump assembly)-新改模具

序号	物料编码	零件图号	物料名称	物料名称	用量	设计 变更	设变 时间	单价	单价	备注
NO.	PART CODE	Old drawing ref.code	Description	Description	Quantity	Desig n chang	Date	RMB	USD	Remark
1	2.23.0116.00215	DD253MM-0116002	水泵盖（新模）电镀	(Water pump cover)	1					
2	2.23.0116.10208	DD253MM-0116102	水泵进水管接头（亚光黑	inlet water pump connector	1					
3	2.23.0116.00610	DD253MM-0116006	泵盖密封圈（新）	(O-ring of pump cover)	1					
4	2.23.0112.11000	DD253MM-0112110	水泵出水管纸垫	water pump gasket	1					
5	2.23.0116.00402	DD250E-9-0116004	叶轮	(Fan)	1					
6	2.23.0116.20000	DD250E-9-0116200	水封B	(Water seal B)	1					
7	2.23.0116.10000	DD250E-9-0116100	水封A	(Water seal A)	1					
8	2.23.0116.30000	DD250E-9-0116300	油封21x10x5	(Oil seal 21x10x5)	1					
9	2.23.0116.00310	DD253MM-9-0116003	水泵轴	(Water pump shaft)	1					
10	2.99.70.0600000	GB/T276-94	轴承6000	(Bearing 6000)	1					

11	2.99.70.0620000	GB/T276-94	轴承6200	(Bearing 6200)	1					
12	2.99.63.0800000	GB896-86	挡圈8	(Retaining ring 8)	1					
13	2.23.0112.1090R	DD253MM-0112109	水管接头 (亚光黑)	water hose connector	1					
14	2.99.06.060160S	GB5787-86	螺栓M6x16	Bolt M6x16	2					
15	2.99.26.060120S	GB5787-86	螺栓M6x12	Bolt M6x12	1					
16	2.20.0108.0040S	DD250E-0108004A	螺栓M6x20	Bolt M6x20	3					

E-17: 冷却系统(Cooling system)



E-17: 冷却系统(Cooling system)

序号	物料编码	零件图号	物料名称	物料名称	用量	设计 变更	设变 时间	单价	单价	备注
----	------	------	------	------	----	----------	----------	----	----	----

NO.	PART CODE	drawing ref.code	Description	Description	Quantity	Design chang	Date	RMB	USD	Remark
1	2.27.0117.11030	DD300G-0117110C	水箱(铝, 阿根廷专用)	Radiator	1					银色
2	2.23.0117.12000	DD250E-9-0117120	风扇开关	Fan motor switch	1					
3	2.24.0117.20030	DD250E-9A-0117200B	风扇组件(松下)	Fan set	1					
4	2.99.22.050120R	GB5781-86 M5x12	螺栓M5x12	Bolt M5x12	2					
5	2.99.54.0500000	GB95-85 5	平垫圈5	Washer 5	2					
6	2.22.0107.00100	DD262MP-0107001A	水箱进水管Φ17.5(350E-6)	inlet hose	1					
7	2.24.0117.00700	DD250E-9A-0117007	水箱减震垫	Radiator cushion Washer	4					
8	2.24.0117.00600	DD250E-9A-0117006	水箱减震垫钢套	Radiator Cushion Washer	4					
9	2.24.0117.00200	DD250E-9A-0117002B	水箱出水管	hose out	1					
10	2.27.0117.00500	DD300E-6-0117005	辅助水箱进水管	Hose of water outlet	1					
11	1.72.00.000040	DD250G-2N-0000-001	双头螺杆M6×32(水箱)	two end bolt	4					
12	2.23.0117.00300	DD250E-9-0117003	水管夹	Hose clip	2					
13	2.23.0117.41000	DD250E-9-0117410	水箱盖	(Radiator cap)	1					
14	2.23.0117.40100	DD250E-9-0117401	水箱盖体	(Hull, radiator cap)	1					
15	2.23.0117.01000	DD250E-9-0117010	管夹φ27	Tube clip φ27	4					